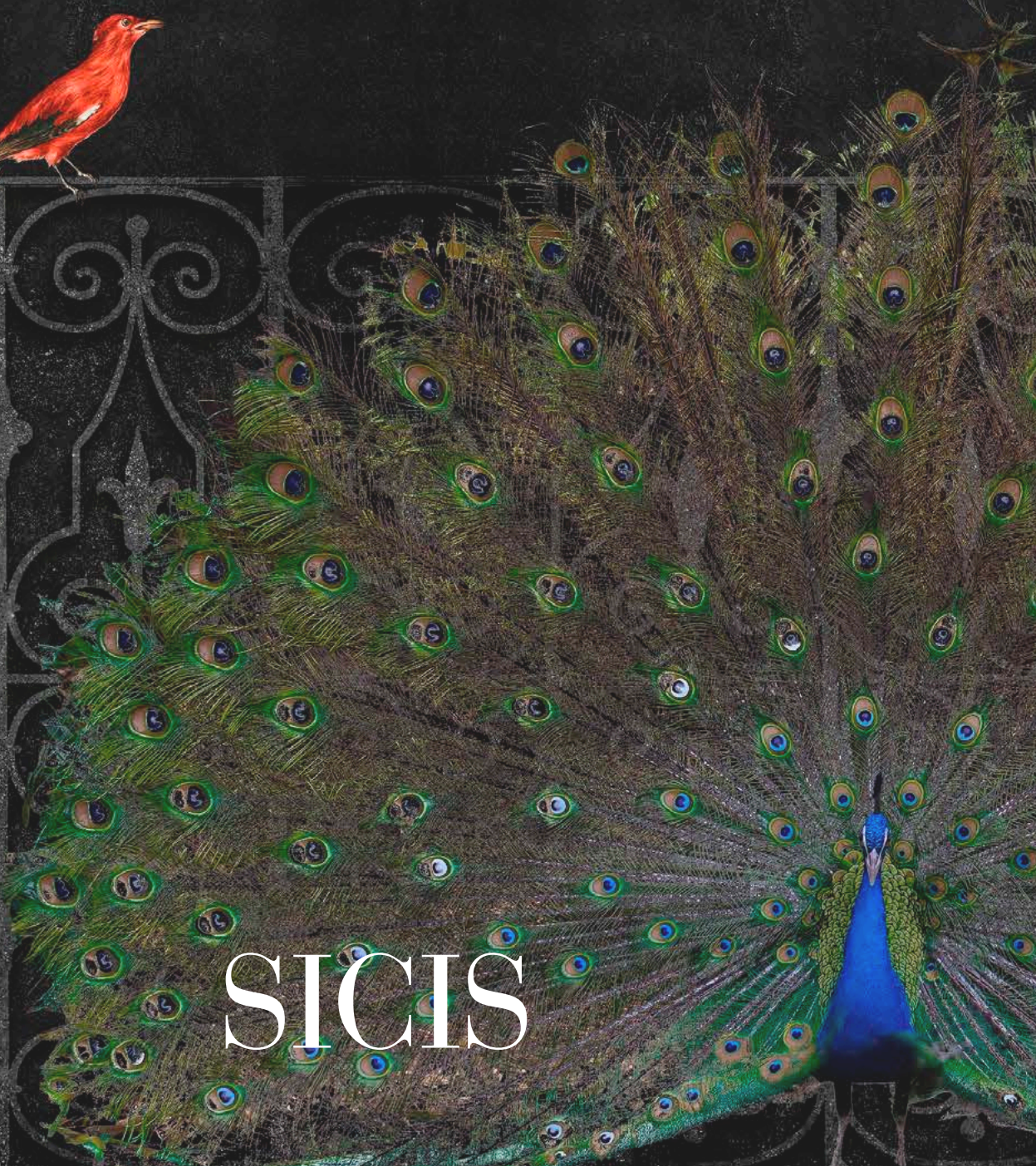


EKLEKTIKOS

A new chapter in SICIS' story



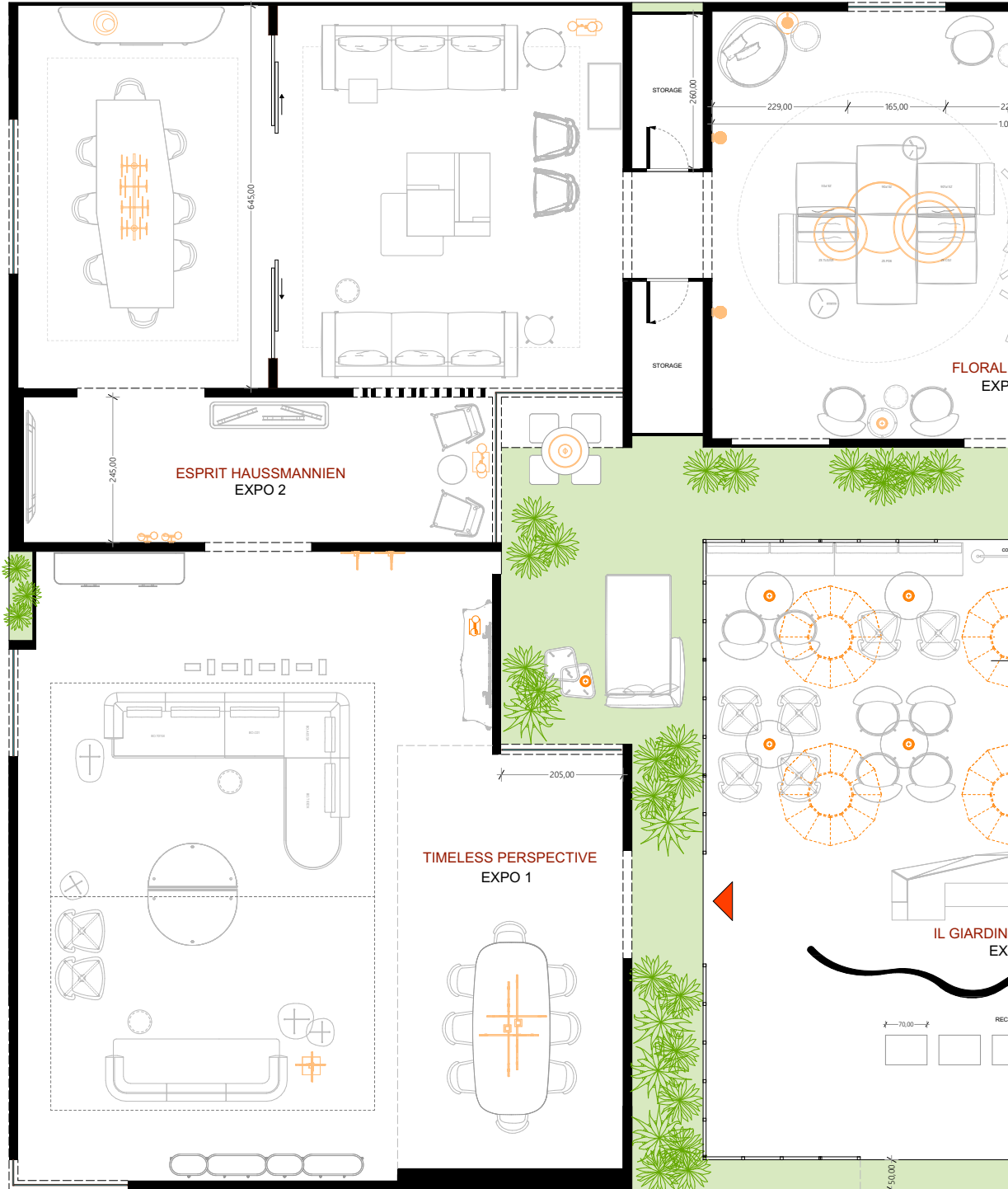
SICIS

EKLEKTIKOS

The thought behind SICIS' proposals for Salone del Mobile.Milano originates from classical culture. It is, in fact, inspired by a Greek term, "eklektikos," meaning the ability to choose what appears to be the best among the infinite aesthetic possibilities that history offers us. In design, the concept of eclecticism translates into the attitude of drawing from multiple sources and styles, combining furniture and decorations belonging to different epochs, harmonizing them in a blend that creates a new sense of contemporaneity.

It is in this perspective that SICIS proposes its new Home collections, combining them with artisanal decorative furniture that create a complete universe of furnishings, surfaces, textiles, and accessories for solutions in line with the demands of an increasingly refined, demanding, and constantly evolving market.

General plan







未预约访客登记
中文

NEW REGISTRATION
International

HOBAS
◀

РЕГИСТРАЦИЯ

Русский

تسجيل جديد

العربية

PRESS
MARKETING

SICIS®



SICIS





SICIS





SIGIS





未预约访客登记

中文

NEW REGIS

Inter

Entrance

PRODUCT LIST



1. BOTANIX Artistic Mosaic Panel 740x350cm
2. DROP Ceiling Lamp 1 and 2

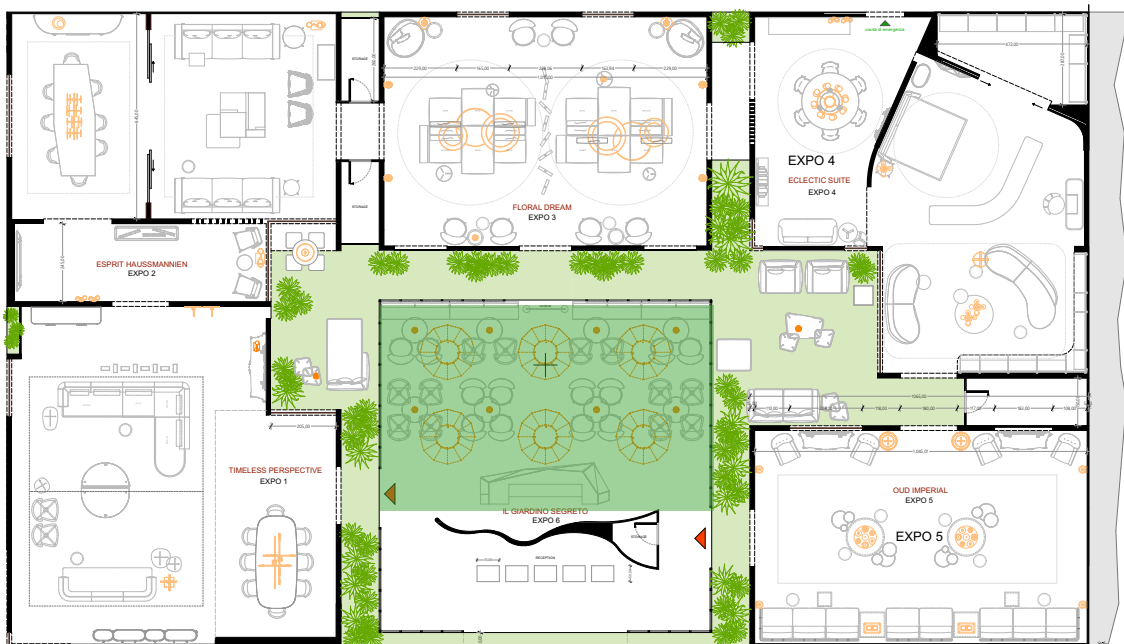
THE SECRET GARDEN

The style of the room is deliberately inspired by the greenhouses of the noble rural houses of the 19th century. A huge artistic mosaic panel with a botanical subject heralds the original character of ancient memory reinterpreted to bring out this year's mood in the best possible way.

The ambience is furnished with convivial islands defined by black and white marble floors on which Amaretto and Niels armchairs gravitate around Amaretto tables with Vetríte tops.

To accentuate the character of the structure, XL Giacarta suspensions come down, covered with a fabric designed and printed with a botanical subject, the same that covers some armchairs but in a jacquard version.

Botanica is one fabric collections that are presented exclusively at this Salone, here declined in a white background/green flowers and black background/color flowers version. A sculpture bar counter covered in Vetríte stands out against a large wall covered in Botanica wallpaper fabric. Green vines and Baroque friezes are suspended between one lamp and another to create a magical effect and enhance the "timeless" character.







SICIS



SICIS

SICIS



SICIS





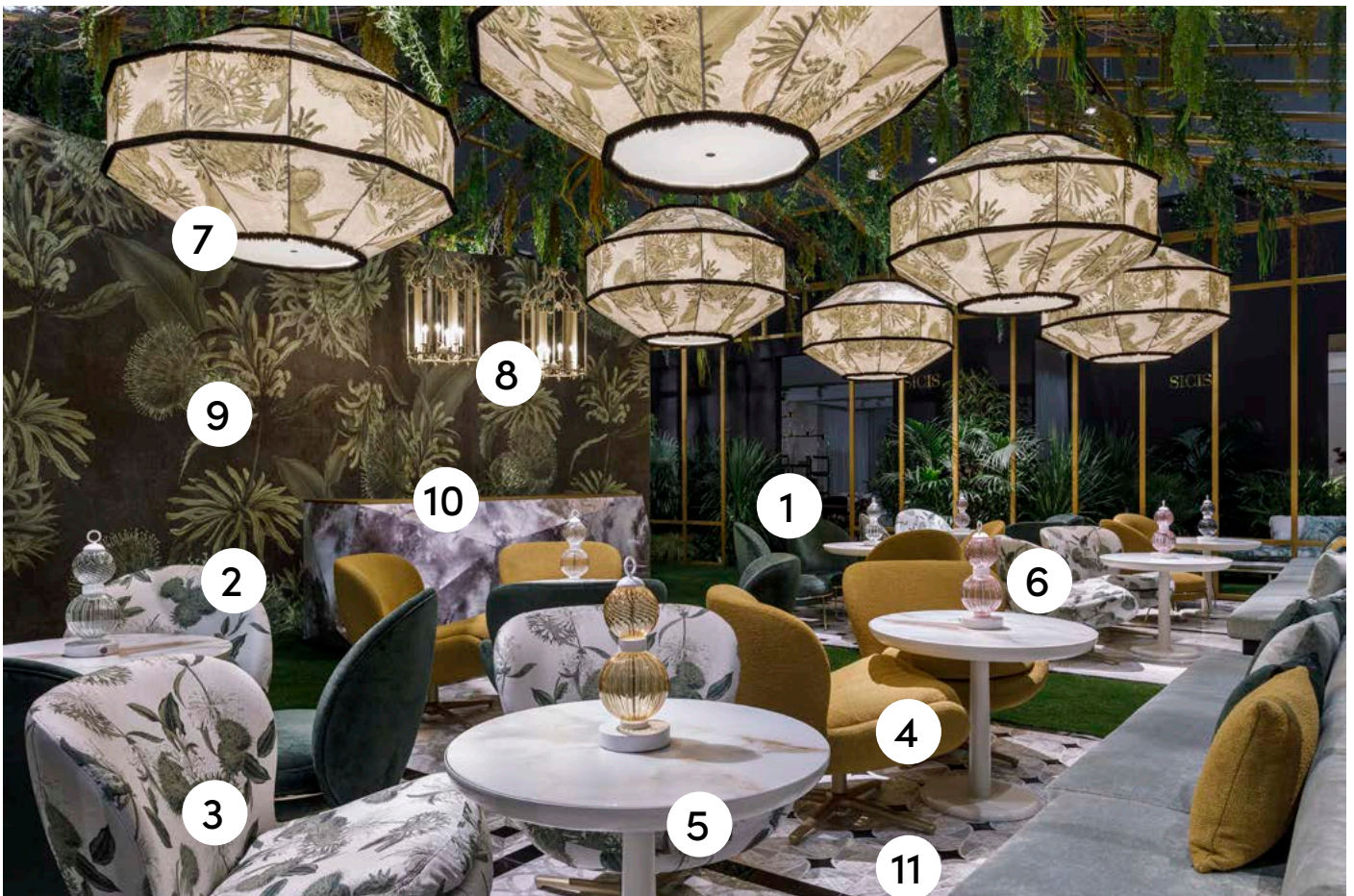
SICIS





The secret garden

PRODUCT LIST



1. AMARETTO Armchair Elios Bottle, polished champagne frame
2. AMARETTO Armchair Botanica Green, polished champagne frame
3. NIELS Swivel Armchair Botanica Green, matt champagne frame
4. NIELS Swivel Armchair Dunmore Mustard, matt champagne frame
5. AMARETTO Round Low Table, top Vetríte Electric Marble Cal Natural, matt white frame
6. DROP Battery Lamp, bronze/pink/white spheres, matt white base
7. GIACARTA Ceiling Lamp, Botanica Green print, 140x85cm
8. LUMIERE Ceiling Lamp, bronze cast frame with champagne finish
9. DARK BLOOM wallpaper
10. VETRÍTE Onigem Nebula
11. CLASSIC MARBLE floor collection, various patterns

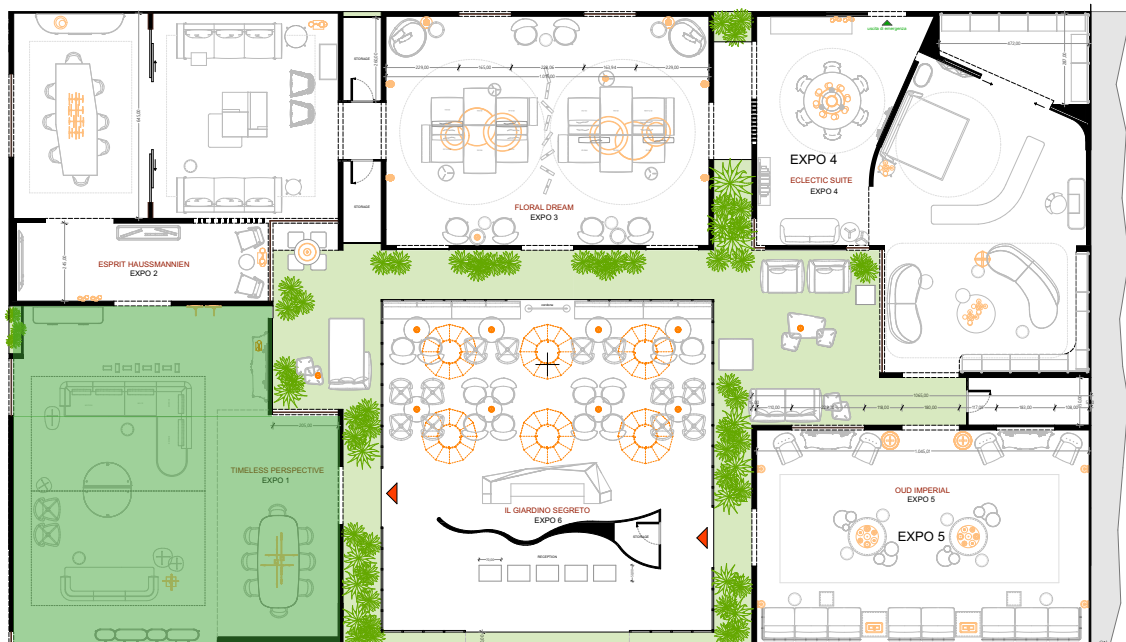
TIMELESS PERSPECTIVE

It is as if this room had been designed 60 years ago, when the culture of interior architecture suggested environments with a strong characterization, where decoration became art by dressing the rooms in detail and creating timeless environments.

Environments whose personality was given by the combination of furnishings from different eras, from family homes or private collections.

This space is divided into dining and living, with an elegant and cultured bourgeois home character that makes it timeless. Not a mere design exercise, but an interior architecture project, where all the elements of the room interact with each other, creating harmony and balance.

The large wall decoration in Vetrite and artistic mosaic takes up architectural styles from the early 1900s, creating perspectives that allow us to glimpse ideal gardens such as in the "Toile de Jouy" from the decorative arts of the late 18th century.





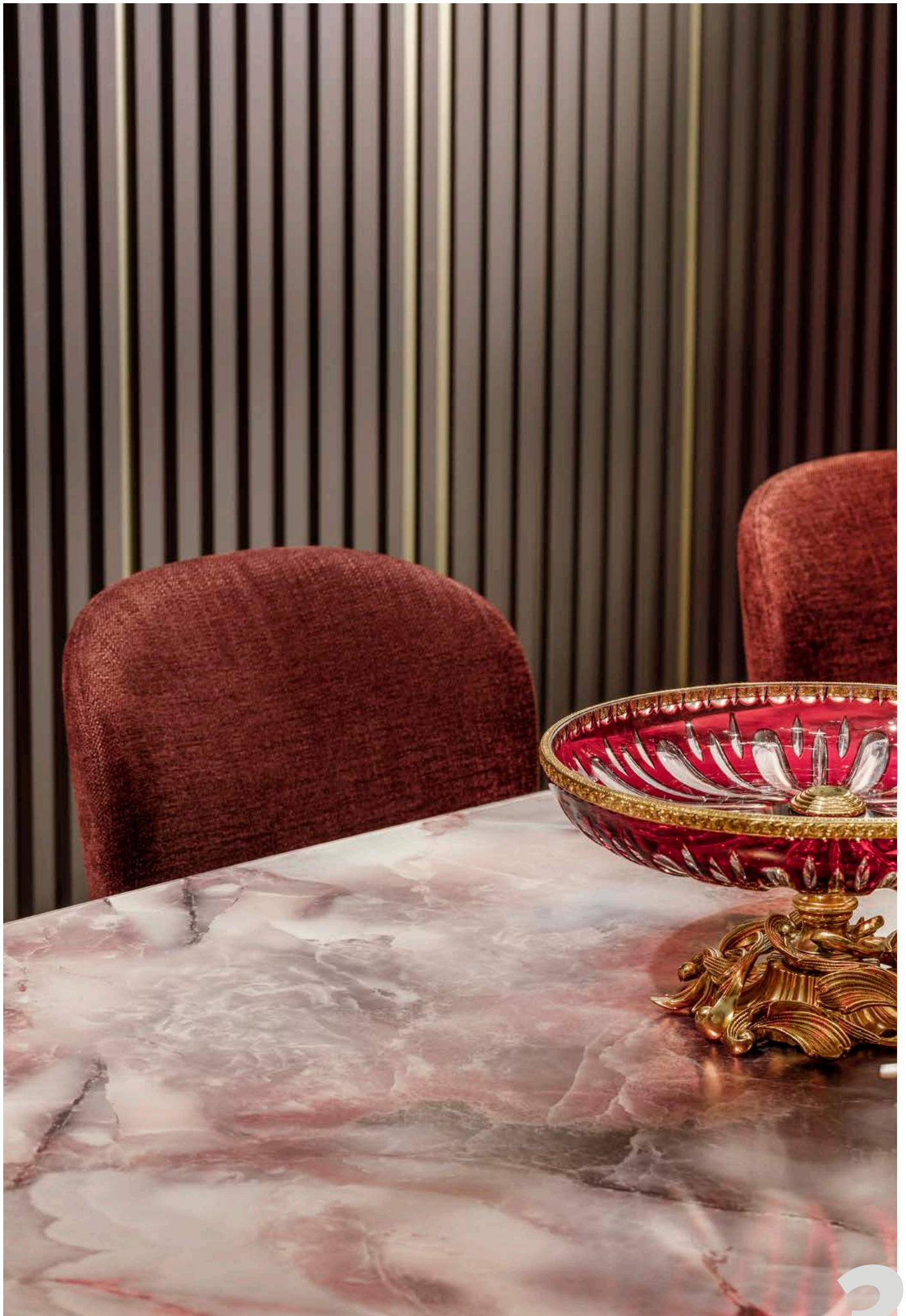


SICIS





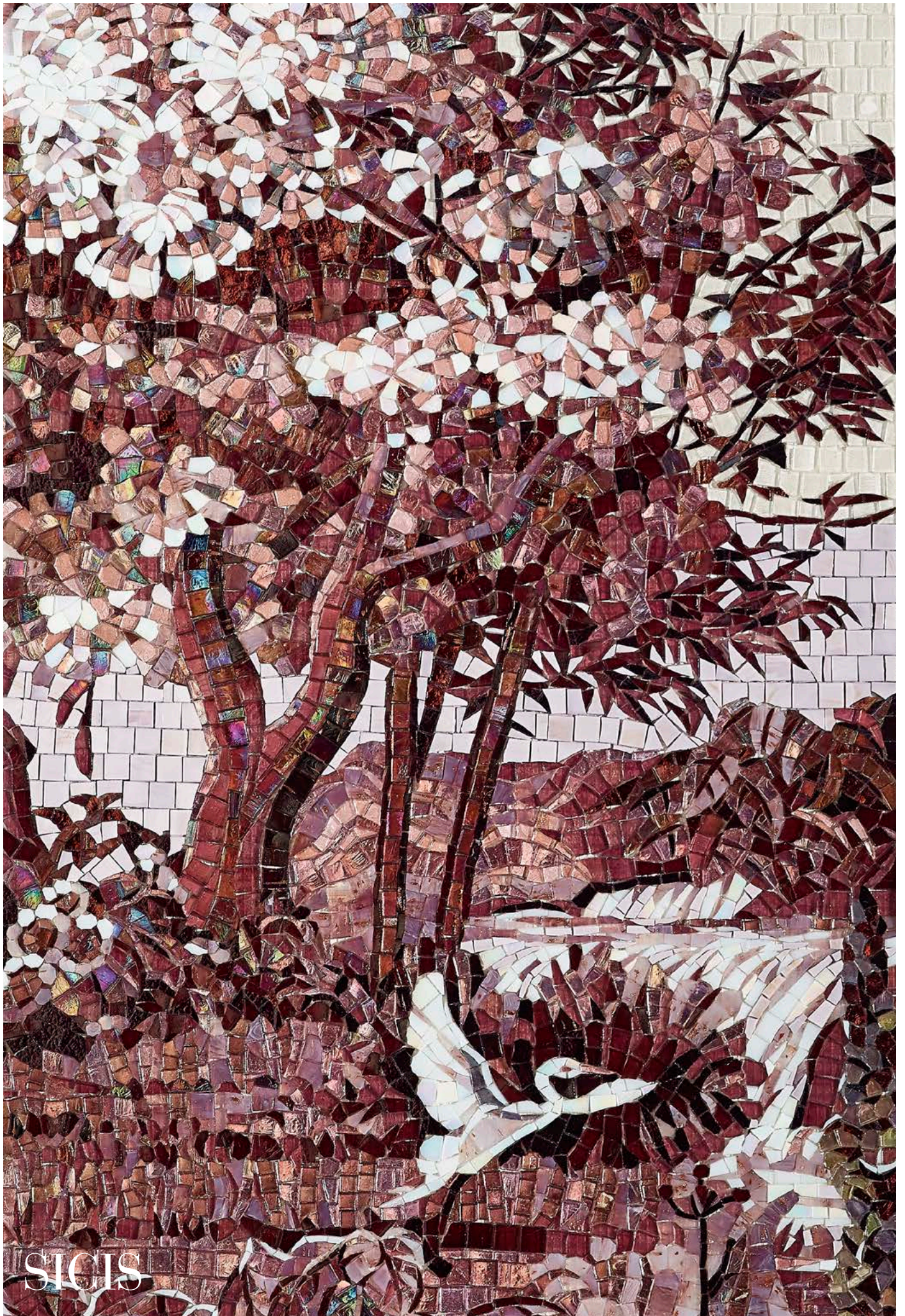
SICIS



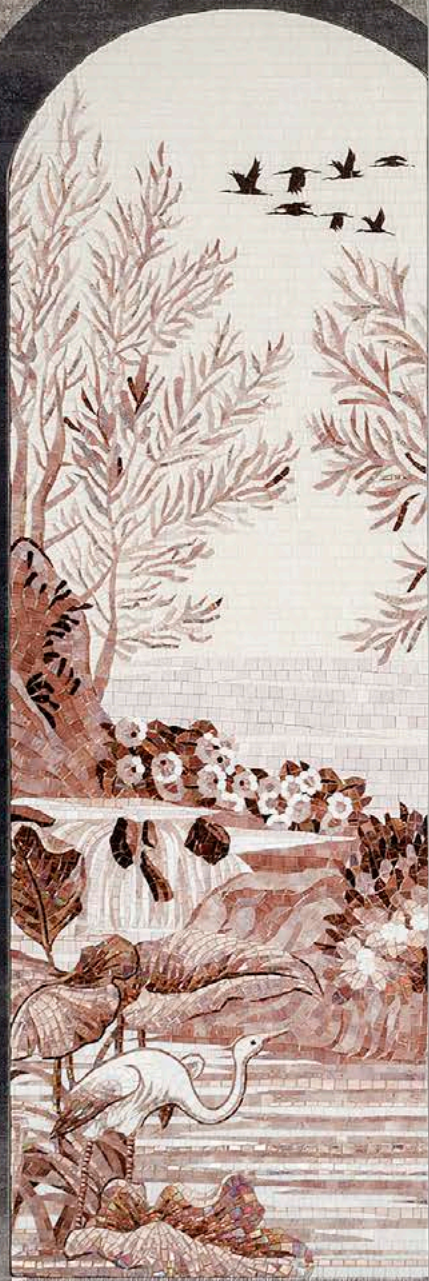


SICIS





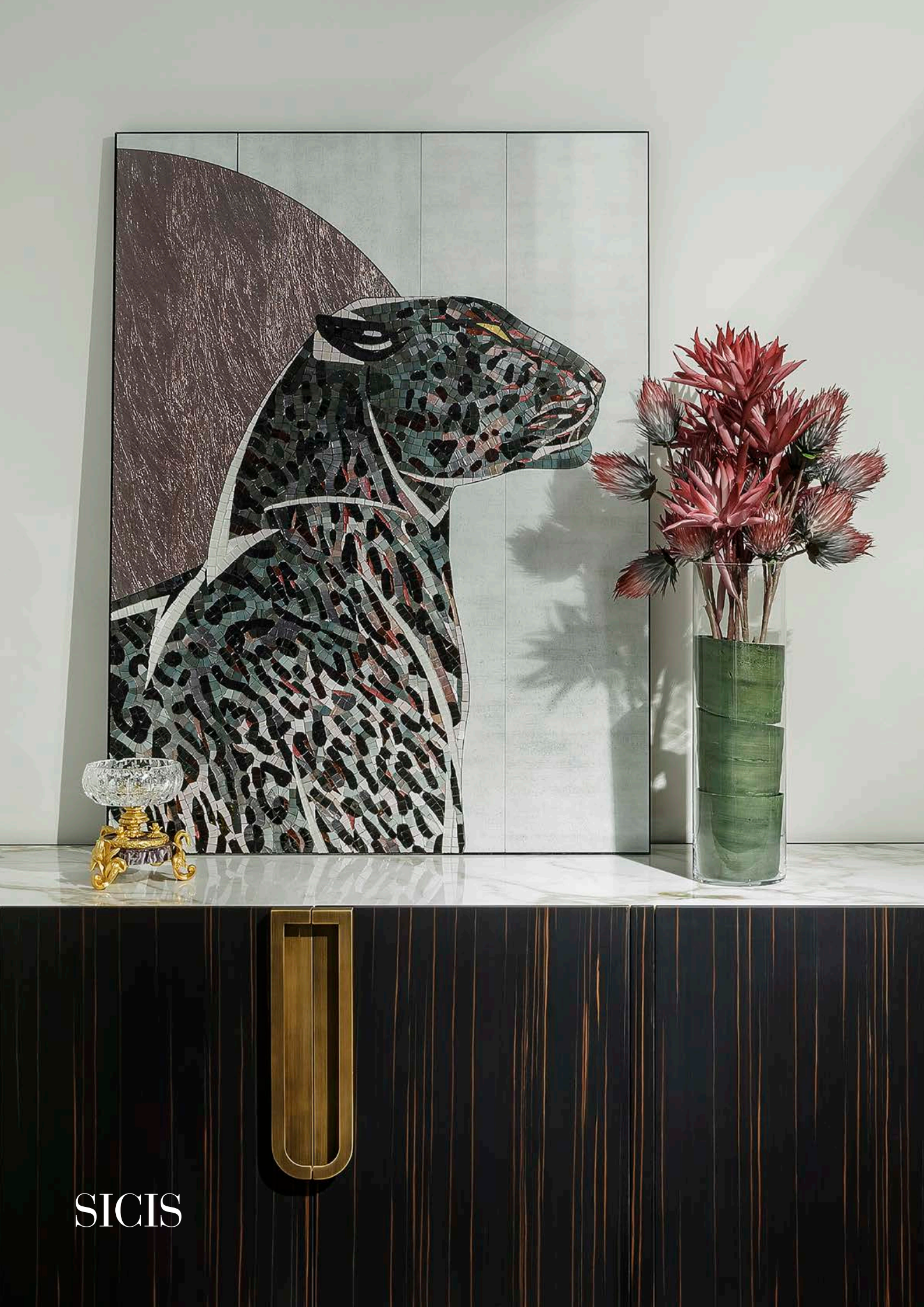
SICIS



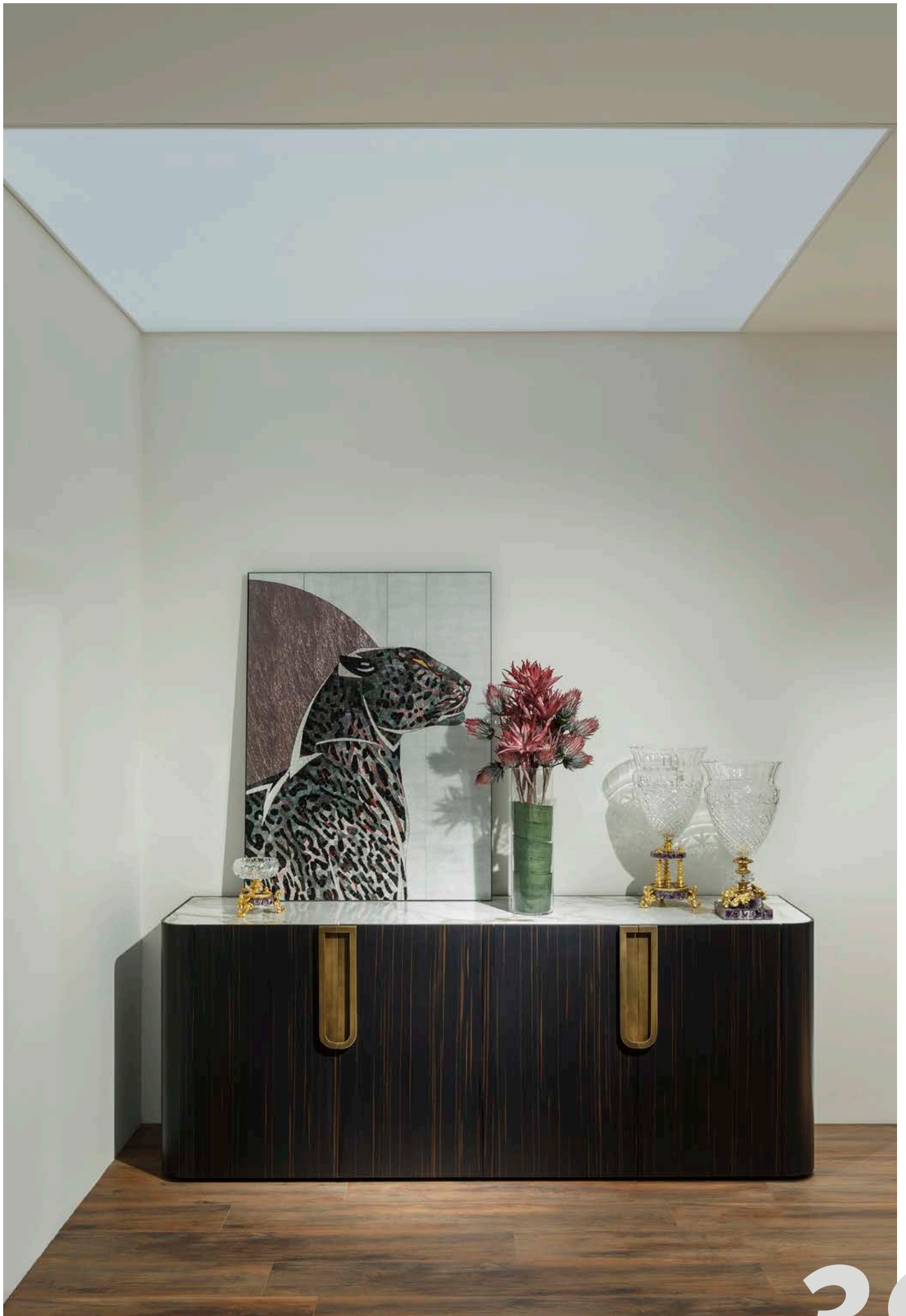


SICIS





SICIS





SICIS





SICIS





SICIS





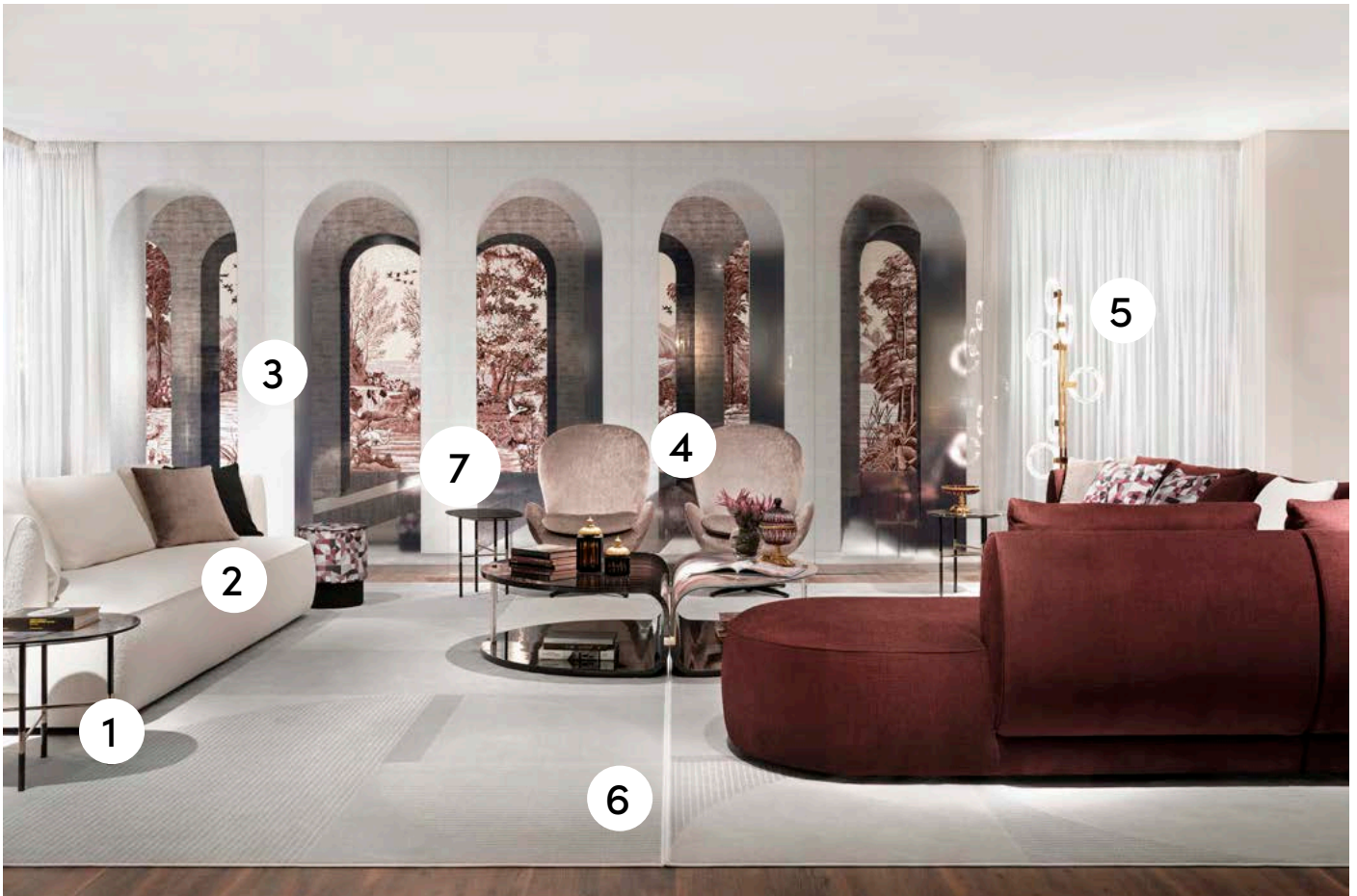
SICIS





Timeless
perspective

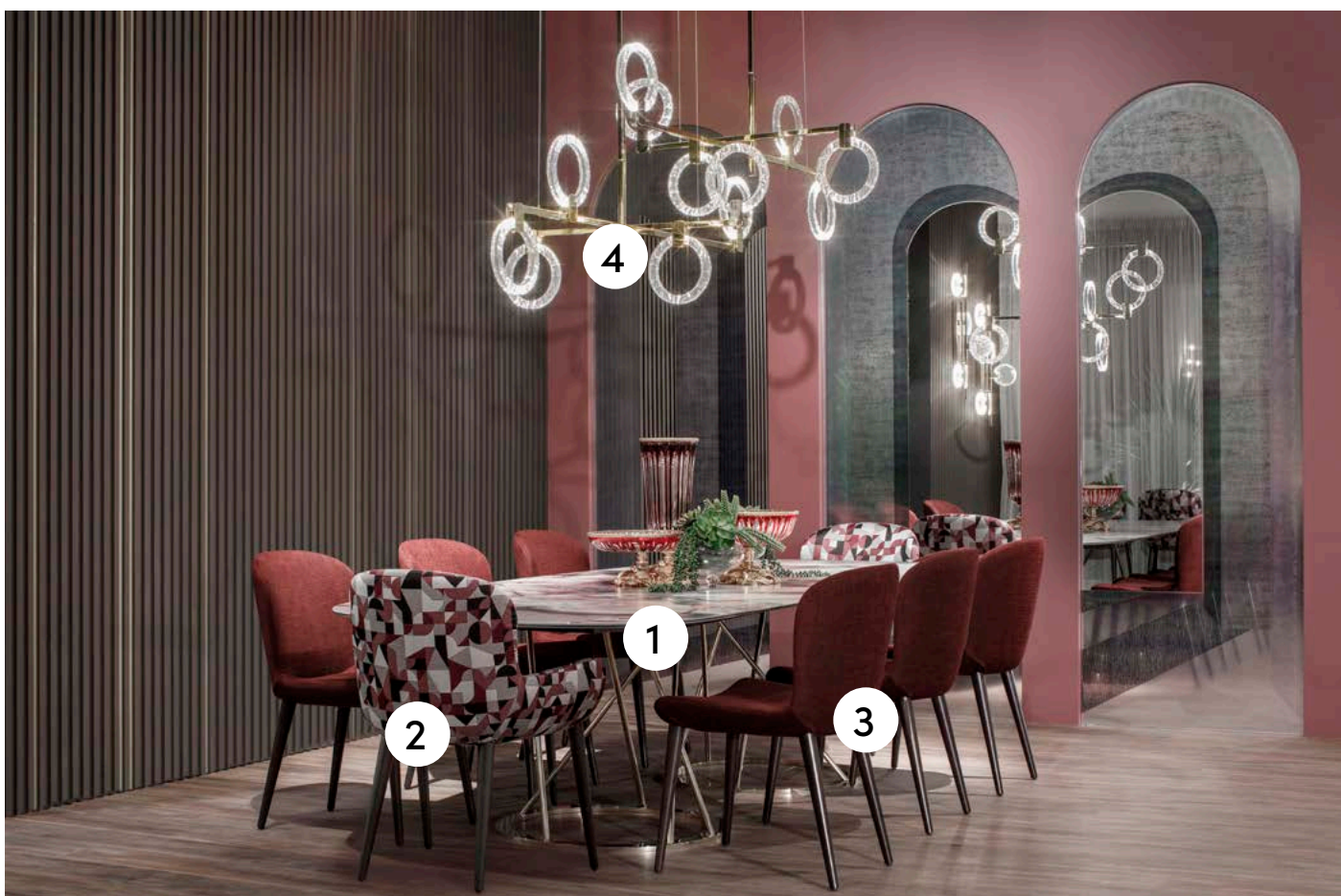
PRODUCT LIST



1. JUPITER Small Table 2, top in Vetríte Onigem Mocha
2. BOTERO 4 Seater Sofa Dunmore Cotton, 306cm
3. SAINT JEAN Vetríte composition with artistic mosaic
4. NIELS Bergere Elios Raspberry, polished black nickel frame
5. POLO Floor Lamp, polished champagne finish
6. MOON Grey Rug, 360x545cm
7. JUPITER Small Table 1, top in Black Aziz marble



1. CHAMALEON Round Pouf Ford Burgundy/Danae Black
2. FELIS artistic mosaic artwork, 90x120cm
3. FLUXUS Buffet 2018, matt Amara Ebony, top in Calacatta Gold marble
4. BOTERO Sofa Composition C17 Danae Burgundy, 313x298cm
5. MARS Coffee Table M3, polished Amara Ebony and Vetrice Onigem Mocha, 140x75cm
6. MARS Coffee Table M2, polished Amara Ebony, 140x95cm
7. YOUGLASS Columns in Onigem Mocha and polished aluminum frame



1. PHILIPPE Table 290, top in Vetríte Onigem Mocha Solid Satin, basement B1 in polished champagne finish
2. NIELS Chair with Arms Ford Burgundy, legs in matt ebony moka
3. NIELS Chair Danae Burgundy, legs in matt ebony moka
4. POLO Ceiling Lamp, polished champagne finish



1. FEBE Bookshelf mod. 3, frame in matt black finish, metal parts in polished champagne, shelves in matt Amara Ebony, curved bronzed glass

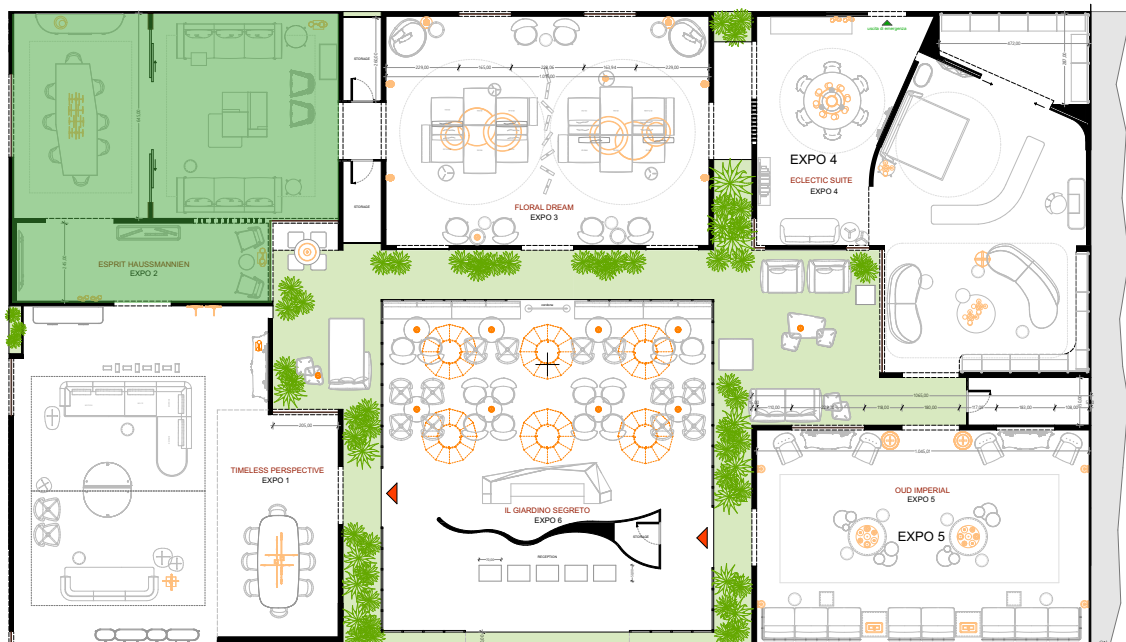


1. JEAN Mirror in oxidated silver patina finish
2. TRIS Table Lamp, polished champagne finish
3. CHARLOTTE Console in oxidated silver patina finish
4. POLO Wall Sconce, polished champagne finish

ESPRIT HAUSSMANNIEN

Environments of an elegant residence inspired by the French 1800s and reinterpreted in a contemporary key thanks to the presence of furnishing elements combined in an original way.

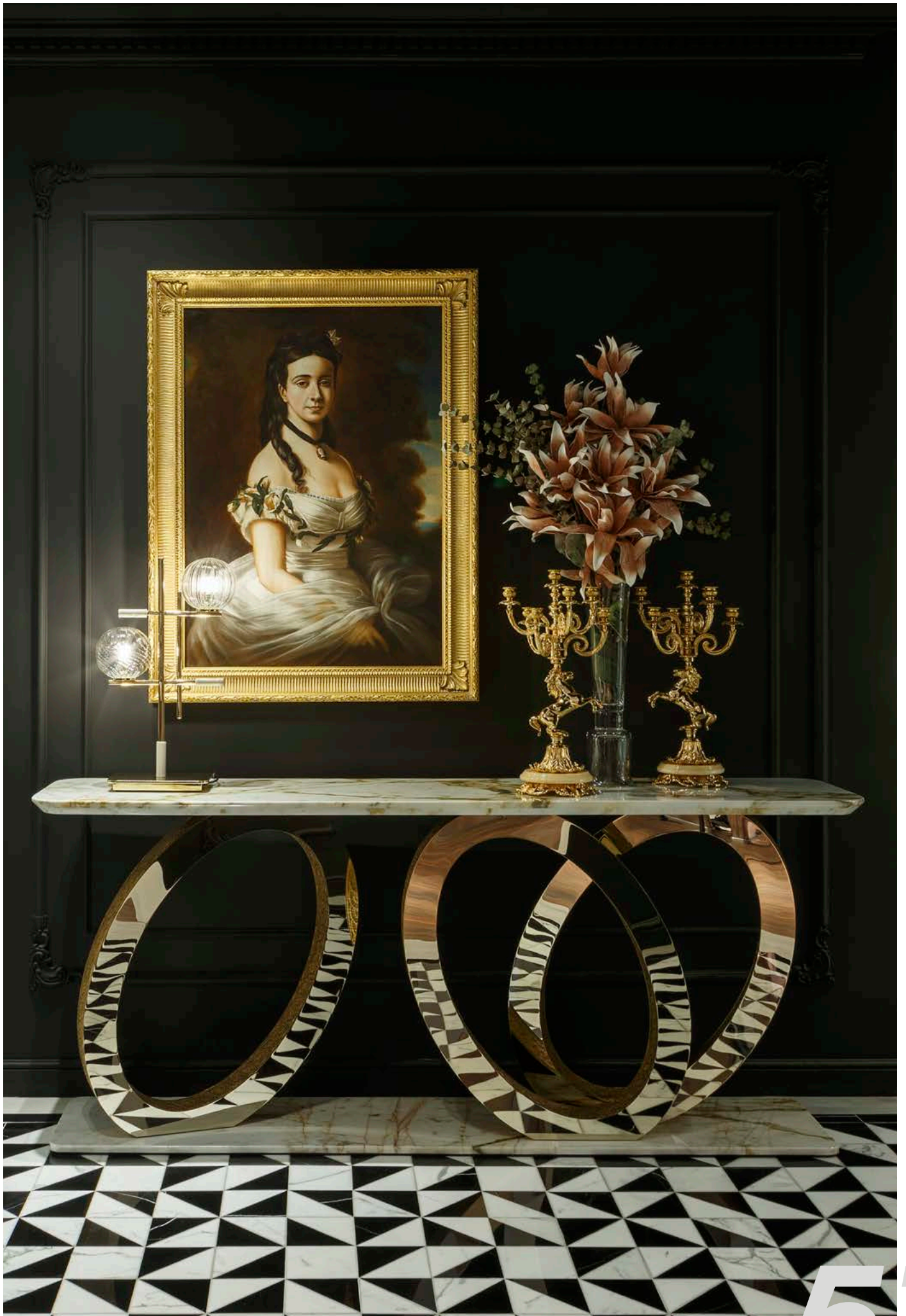
A luxury vintage with some pieces in style that have been recreated by skilled craftsmen and art masters. The eclecticism that guided SICIS is more present than ever in this room: a modern table with asymmetrical lines and Vetrite top is combined with 1960s chairs and an eighteenth-century style buffet cabinet with bronze friezes and champagne finish. The historical references are different and the re-interpretations of the subjects in the artistic mosaic on the wall become works of art that give a complete meaning to the room. They are inspired by grisaille, a technique used in France and Italy during the Renaissance which indicates a monochrome painting that reproduces light and shadow with various shades of gray and some color accents. The new upholstery fabrics reproduce once again a mosaic pattern, in this case the Trigono. As the greatest expression of the eclectic style, there is a cabinet where a baroque frieze supports a container with neoclassical lines. Two Rococo sconces in bronze with ivory patina finish illuminate the scene.







SICIS





SICIS



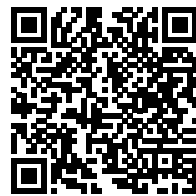


SICIS





SICIS



SICIS Doors



SICIS





SICIS





SICIS





SICIS





SICIS





SICIS



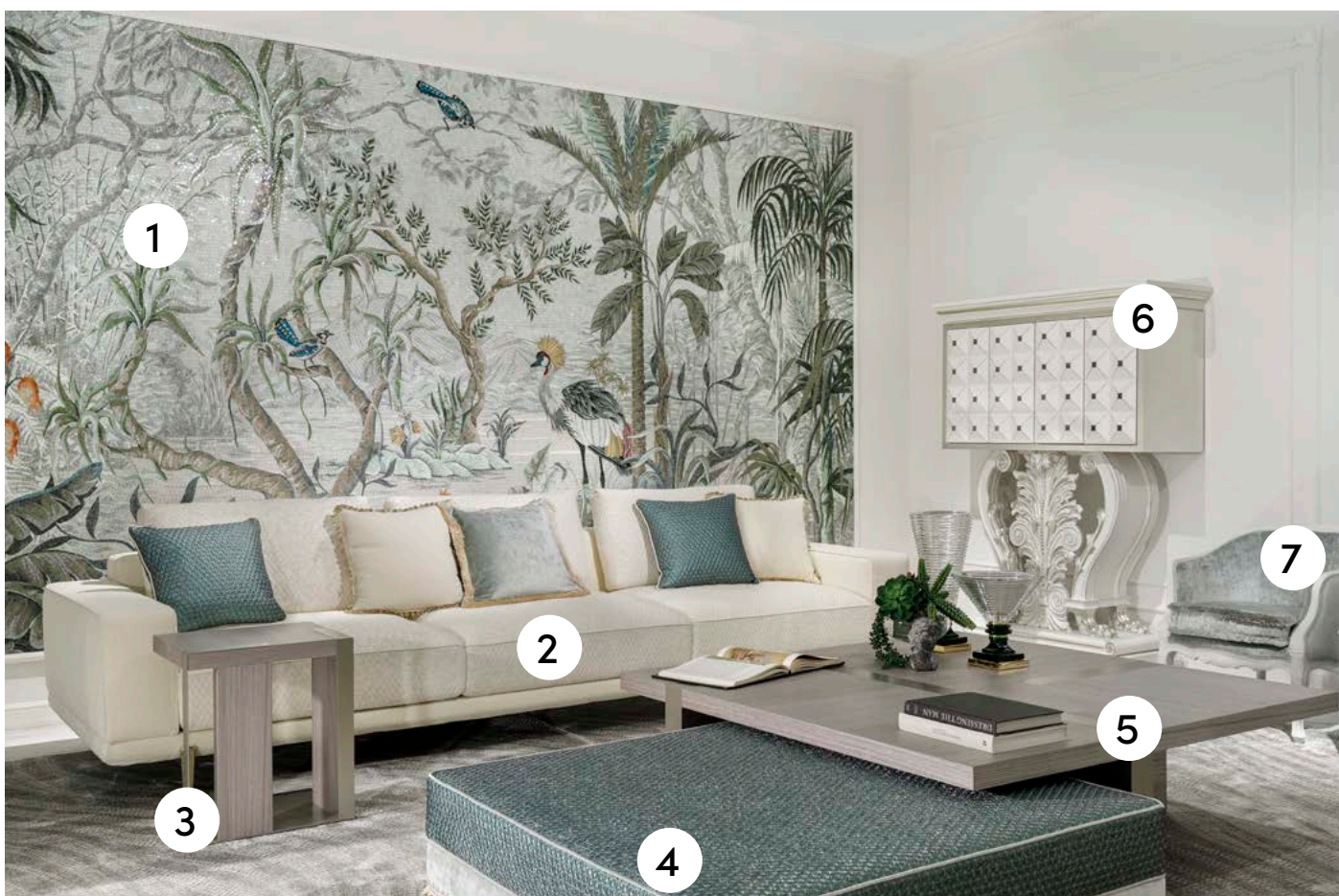


*Esprit
Hausmannien*

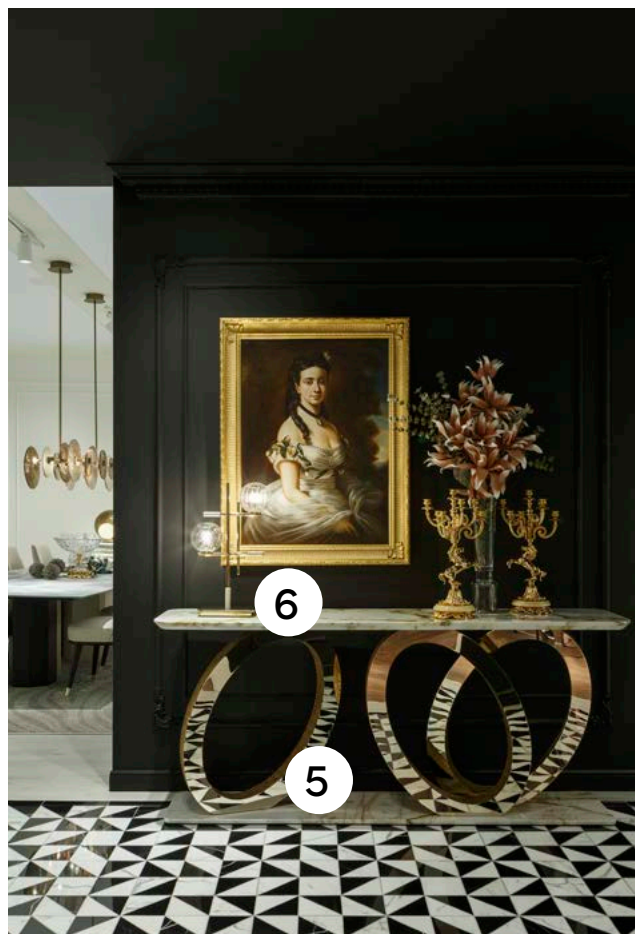
PRODUCT LIST



1. PHILIPPE Table 350, top T2 in Vetrice Onigem Ocean Giada Solid Satin, basement B4 in matt Ash Grey finish and matt Amara Ebony
2. LIAM Chair Merope Sand, legs in matt Ebony Moka
3. TRIANON Buffet, ivory patina finish with champagne bronzes, top in Calacatta Gold marble
4. RIGEL Table Lamp
5. ANDROMEDA Ceiling Lamp, frame in antique bronze finish, discs in bronze finish
6. FRAME Sliding Door with Luxury Frame accessories, frame in polished champagne, metal mesh glass, handle in platinum mosaic, 545x320cm
7. WAVE Beige Rug, 330x480cm



1. MARIMANTI artistic mosaic panel, 492,5x258cm
2. MILTON 3 Seater Sofa Trigono Plain Cream and Trigono Cream, feet in polished champagne with Vetrice Elephant Calima inserts
3. ALEC Side Table, frame in matt Grey Oak Grooved, metal inserts in matt champagne finish
4. TERMEZ Pouf Vitreo Sage and Elios Oxyde, 116x116cm
5. ALEC Coffee Table, frame in matt Grey Oak Grooved, metal inserts in matt champagne finish
6. RITZ Cabinet, ivory patina finish with silver leaf, door inserts in Green Alpi marble
7. 7. ORLEANS Armchair Elios Oxyde, frame in ivory patina finish

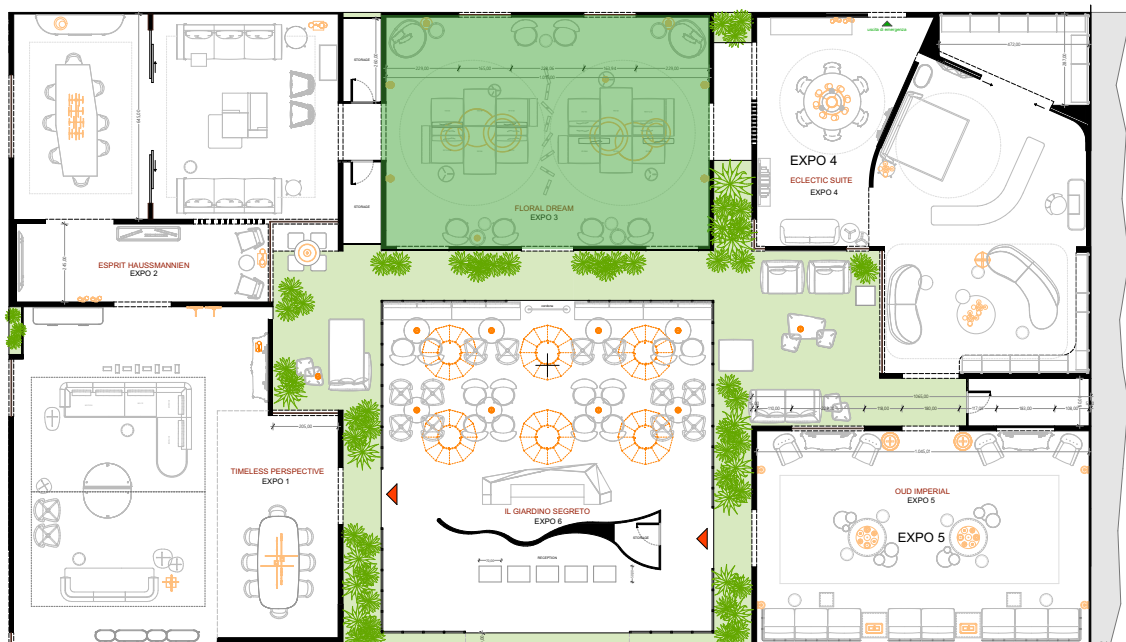


1. PEGGY Armchair Edward Sage, frame in matt champagne finish
2. PEGGY Side Table 50, matt Amara Ebony
3. TRIS Floor Lamp, frame in polished champagne finish
4. MARBLE Floor, Statuario marble and Black Polished marble
5. FLUXUS Console, top and base in Calacatta Gold marble, rings in polished champagne with Kori mosaic insert
6. TRIS Table Lamp, frame in polished champagne finish

FLORAL DREAM

One of the new 2023 collections of upholstery fabrics, Florentia, takes its cue from the decorations of ancient botany books, and is made using the jacquard technique. This room has been designed to emphasize its effect and quality, and to show that even in the textile sector SICIS creates collections that have the mosaic as a common thread. The “dream” of this room is expressed through double-sided compositions of the Zeno sofa that invite you to relax, in an alternation of seats, chaise longues and poufs that structure the space and respond to different needs thanks to their multiple dimensional and chromatic configurations.

The whole room is covered with wallpaper that recalls the floral pattern of the fabric, large arches in Vetrite and a screen with revolving pivot elements that divides the room. Armchairs upholstered in Florentia fabric are combined with tables of different styles, updated using a black and silver patina finish and Vetrite tops. The large Gemma Round and Ring ceiling lamps complete this room by bringing a contemporary touch.





POST-WAR AND CONTEMPORARY ART
BY THE ARTS COUNCIL OF GREAT BRITAIN
DRESSING THE MAN



SICIS





SICIS





SICIS





SICIS





SICIS





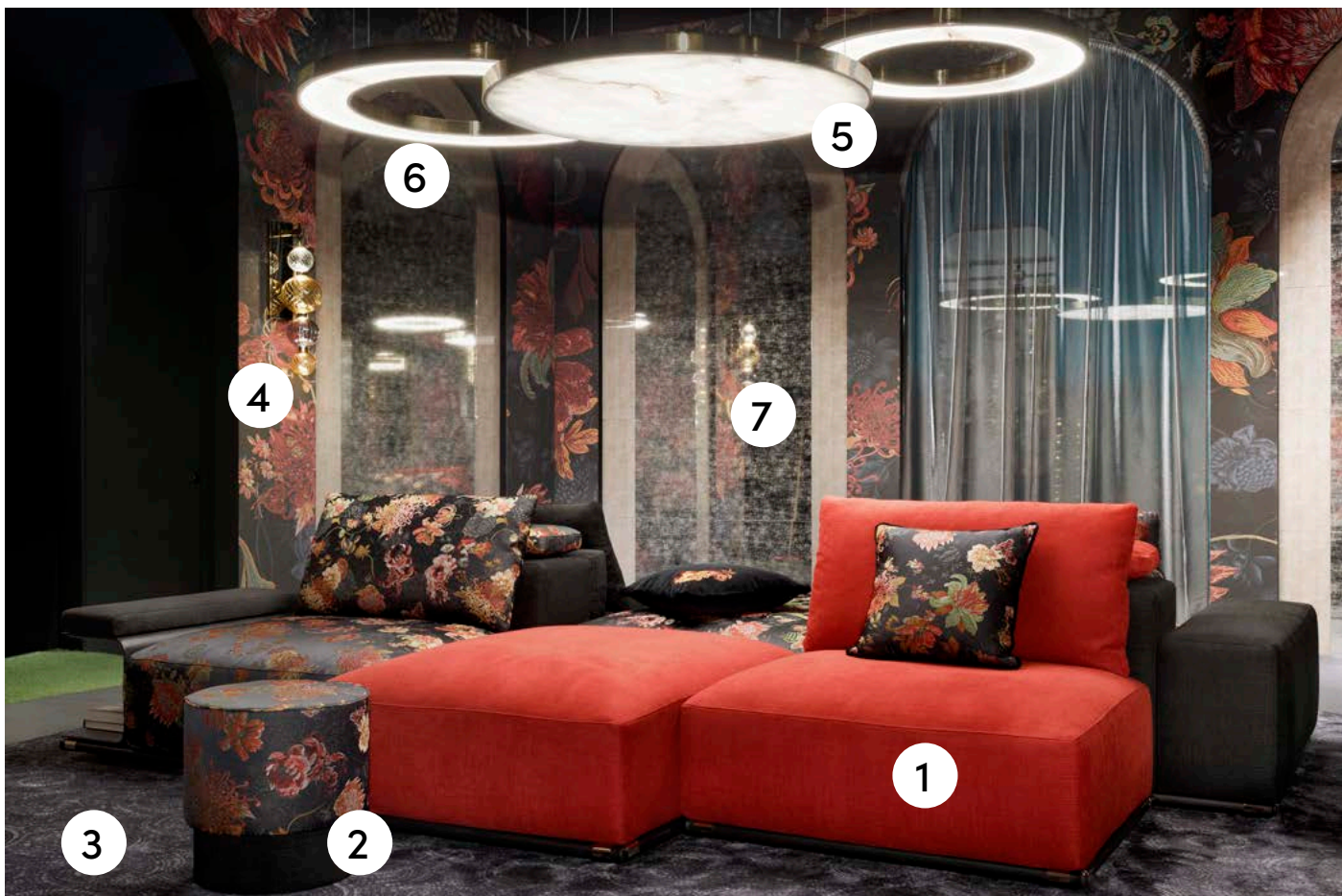
SICIS





*Floral
dream*

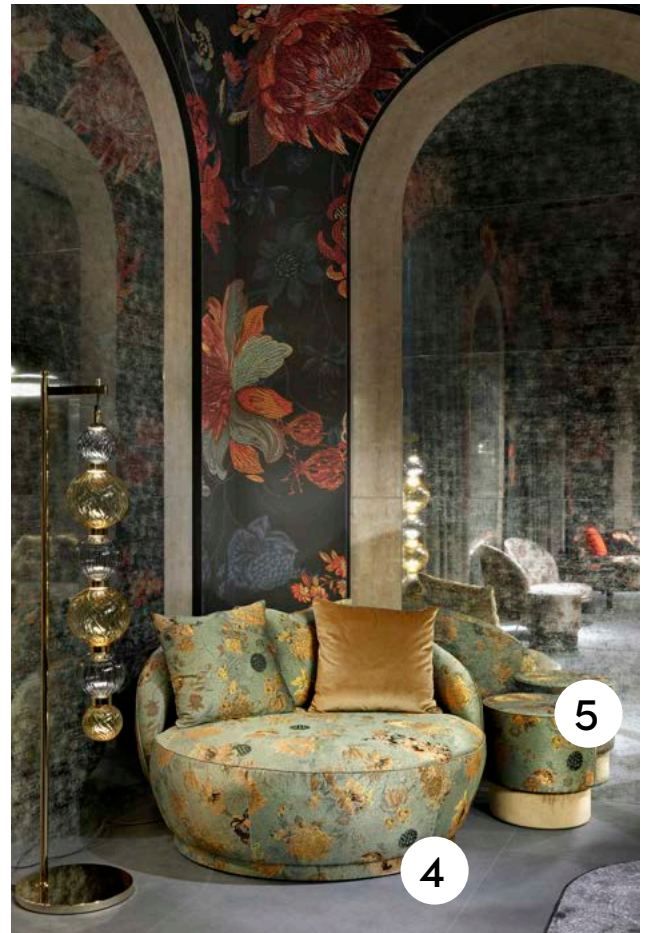
PRODUCT LIST



1. ZENO Sofa Composition Florentia Black, Danae Coral, Danae Black
2. CHAMALEON Pouf Florentia Black and Danae Black
3. FANCY Black Rug, 400x420cm
4. DROP Wall Sconce Bronze
5. GEMMA ROUND 120 Ceiling Lamp, polished champagne and Vetríte Electric Marble Cal Natural
6. GEMMA RING 120 Ceiling Lamp, polished champagne and Vetríte Electric Marble Cal Natural
7. VETRÍTE composition, Vetríte Antique and Vetríte Dragon Corteza Cream



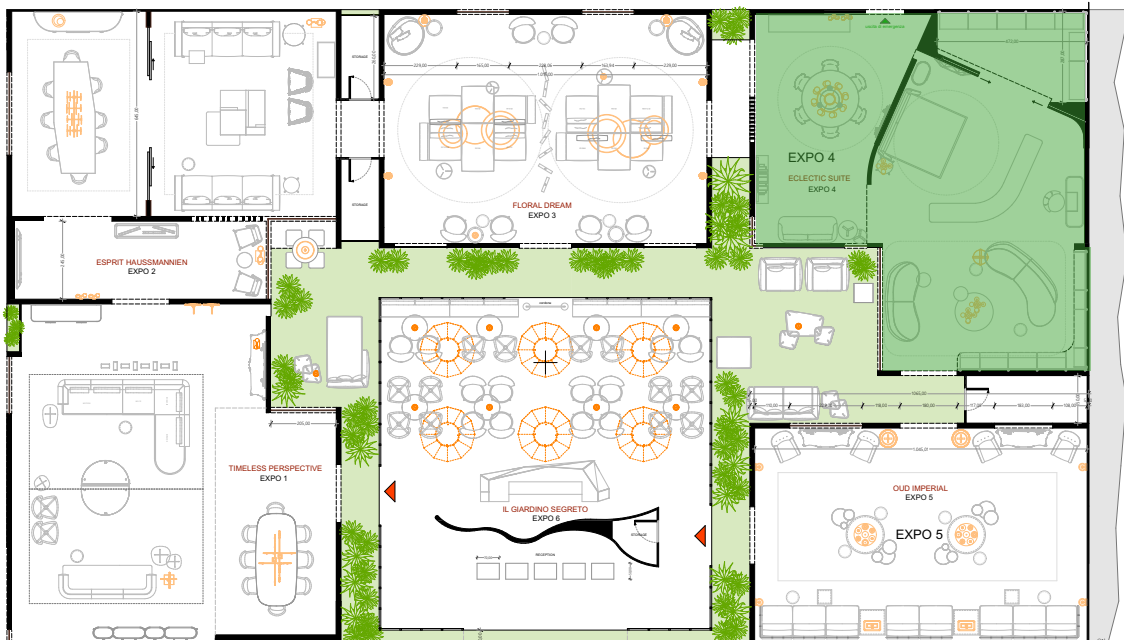
1. ZENO Sofa Composition Florentia Brown and Glauco Tobacco
2. LIAM Side Table Low, matt Amara Ebony, top in Vetrice Electric Marble Cal Natural, legs in polished champagne
3. DROP Floor Lamp Bronze
4. CHAMALEON Pouf Florentia Brown and Glauco Tobacco



1. AMARETTO Armchair Florentia Black/Taupe/Jade, frame polished champagne
2. JAQUES Side Table, frame in oxidated silver patina finish, top and inserts in Vetrite Canapa Fumo Sabbia
3. FLORAL DREAM Wallpaper
4. PRESTIGE Armchair Florentia Jade/Black
5. CHAMALEON Pouf Florentia Jade and Glauco Tobacco

ECLECTIC SUITE

A presidential suite which features a set of furnishings, fabrics, covering materials that fully identify the eclectic style of SICIS for this Salone. Contemporary and clean lines alternate with highly decorative motifs, deconstructed and re-interpreted animalier graphic patterns are used to dress walls and doors in a symphony of petrol blue colours. The large Rococo-style mirror in the dining area represents one of the highest levels of hand-carved and chiseled woodwork, just as the table with a bronze base becomes an iconic piece which, accompanied by contemporary chairs in petroleum velvet, shows how the creativity of the company manages to suggest rooms with a new and original flavor. The bedroom with its wardrobe set up with the Blade system features contemporary lines and the central dividing element with the living room shows the company's ability to interpret spaces and dress them with a dedicated project according to the needs and tastes of the customer with innovative and stylistically unique solutions. The living area features the daytime version of the Blade system and the Prestige sofas reminiscent of the 70s are upholstered in a personalized animalier printed velvet with a mosaic texture that further characterizes it.



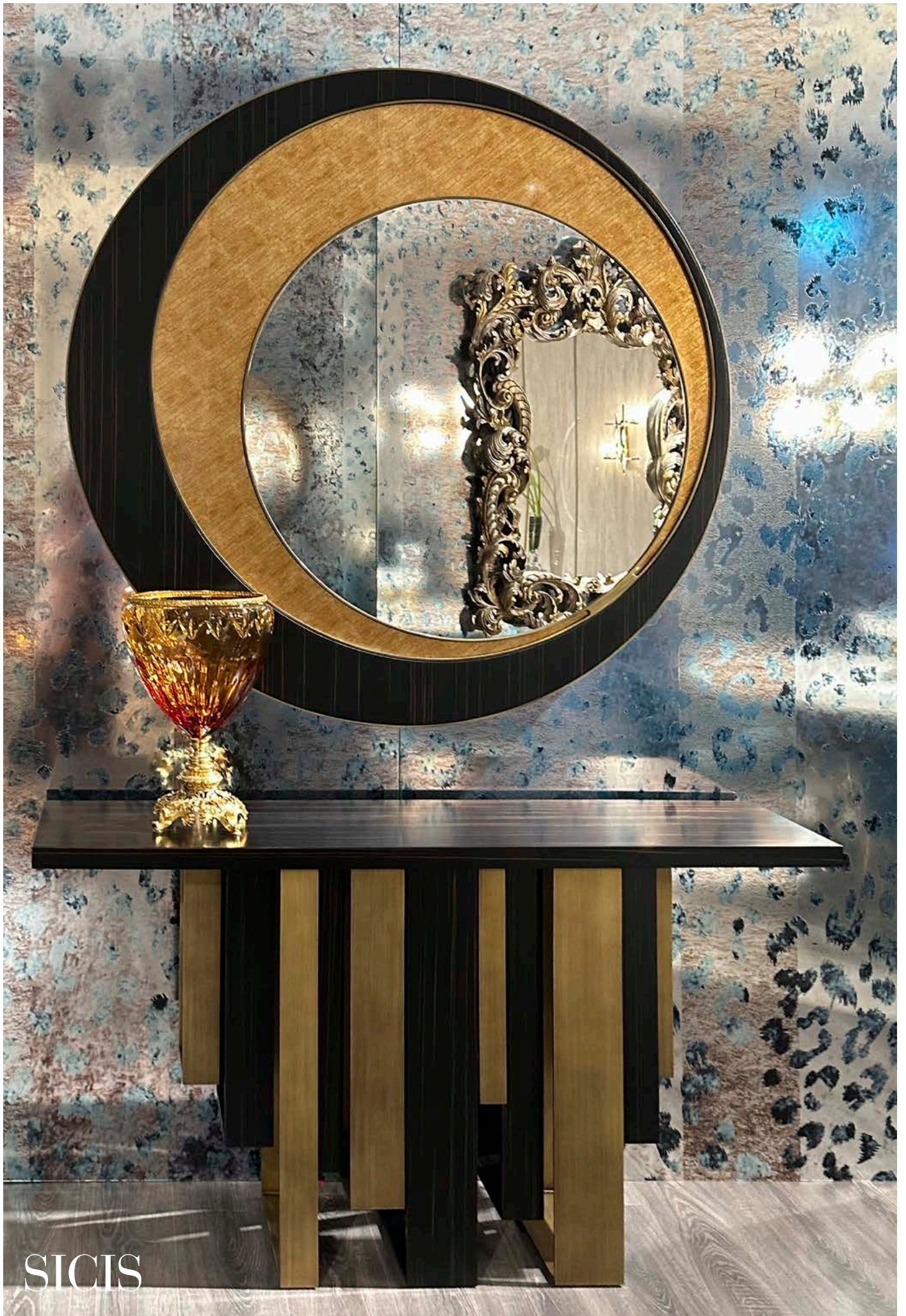




SIGIS



101



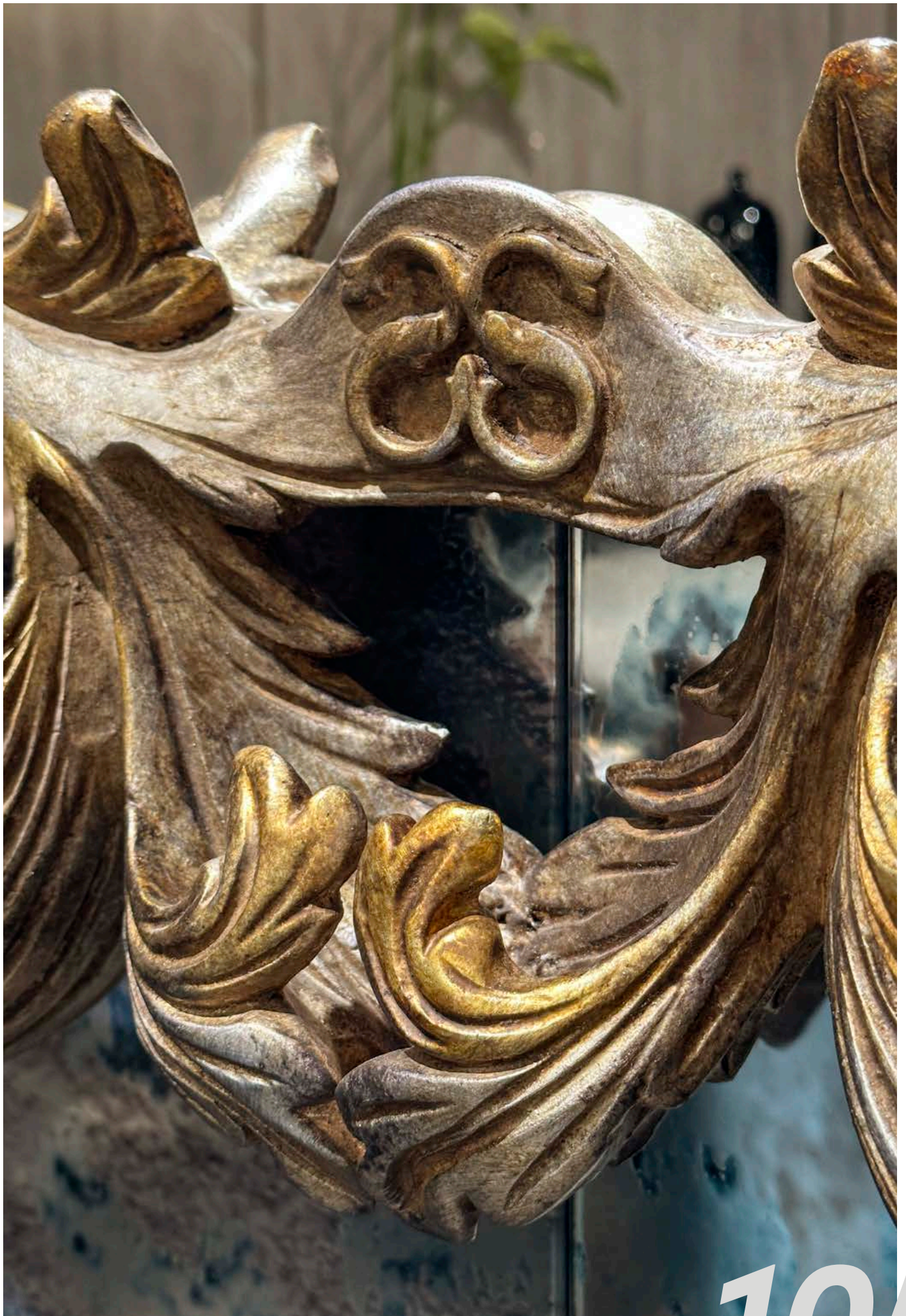
SICIS



103



SICIS





SICIS





SICIS





SICIS





SICIS





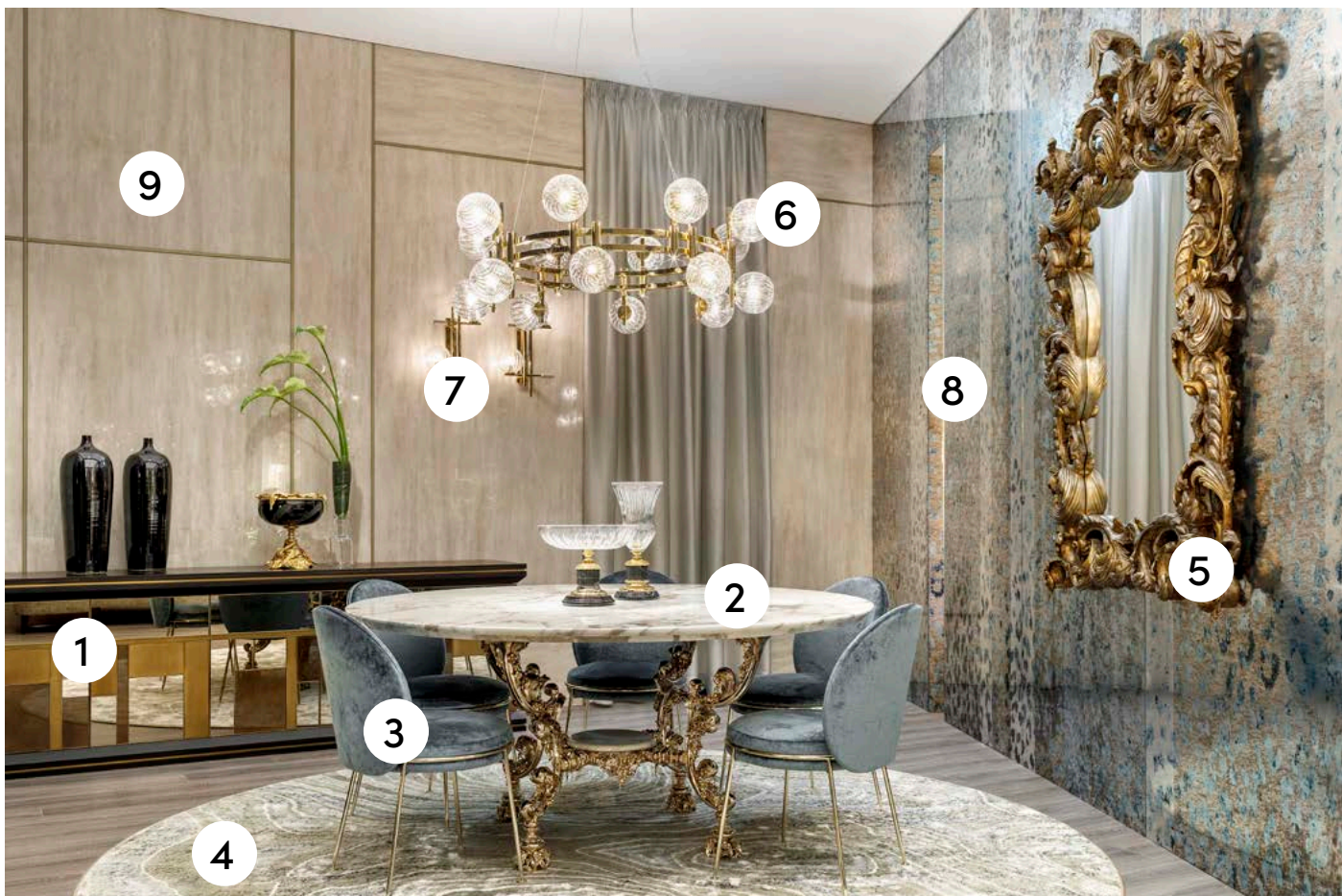
SICIS



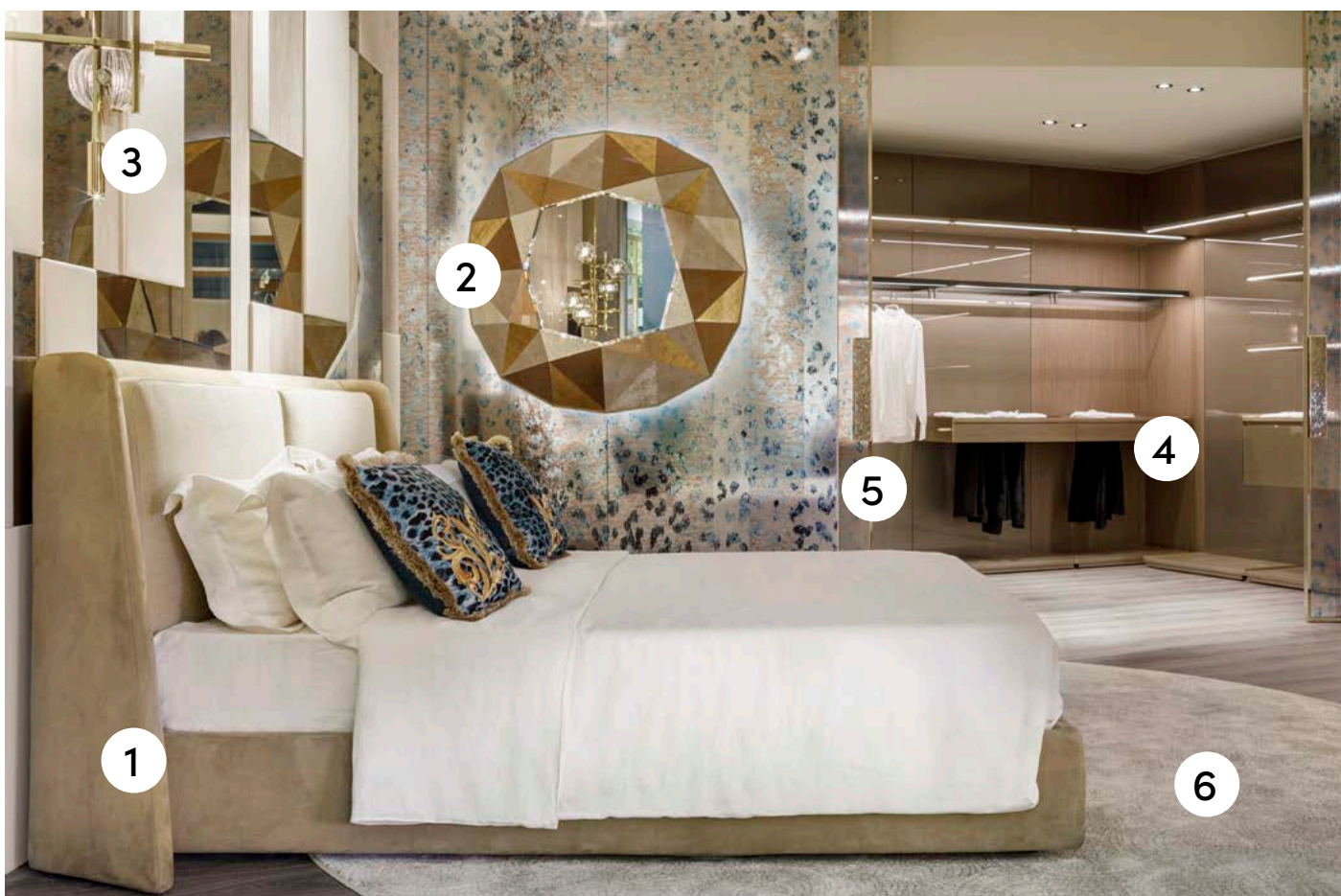


*Eclectic
suite*

PRODUCT LIST



1. VENDOME Buffet, frame in matt Amara Ebony, Vetríte inserts
2. LOUIS Round Table, basement in champagne finish, top in Calacatta Gold marble, 180cm
3. AMARETTO Chair Elios Petroleum, frame in polished champagne
4. PANGEA Beige Rug, 330cm
5. DAUPHINÈ Mirror, frame in silver champagne patina finish
6. TRIS Round Chandelier, polished champagne frame, 112cm
7. TRIS Wall Sconce, polished champagne frame
8. VETRÍTE Mantle Azul
9. VETRÍTE Travertino



1. HUG King Bed in leather Vermont Caramel, headboard cushions in Danae Juta
2. CUSHION Mirror, Vetríte Pergamino Gold, Dust Gold, Dragon Corteza Cream, Skin Urano Caramel
3. TRIS Ceiling Lamp, polished champagne frame
4. BLADE Night System, matt Oak Sand, Vetríte Tela Brown, polished champagne finish
5. FRAME Sliding Door, frame in polished champagne, Vetríte Mantle Azul, handle with platinum mosaic, 120x300cm
6. FANCY Beige Rug, 330cm

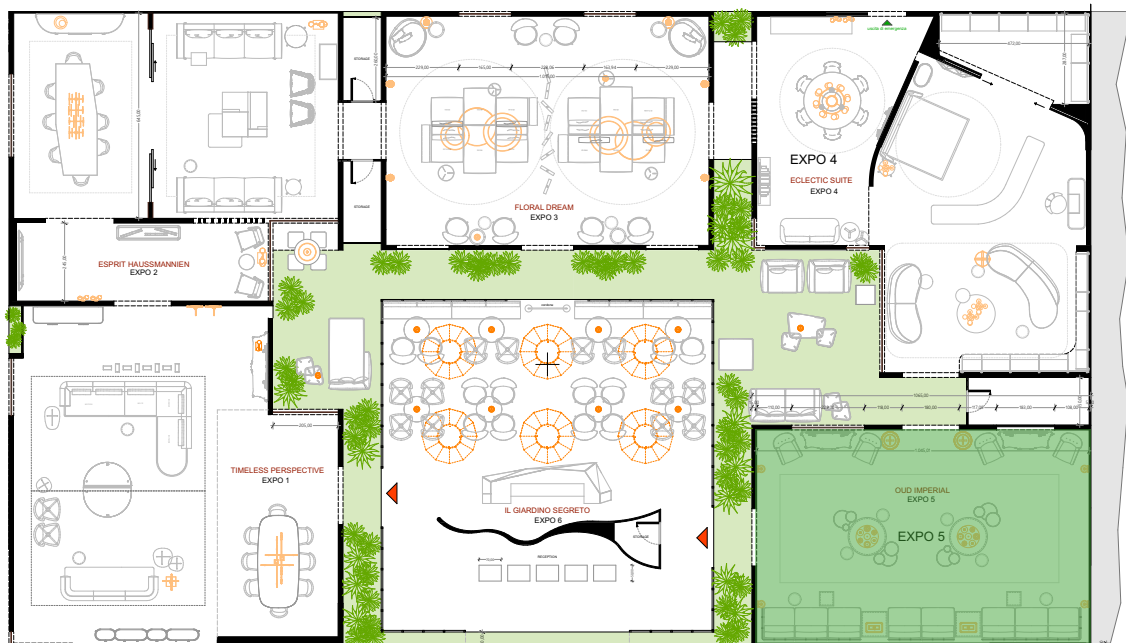


1. PRESTIGE Sofa Composition 2 Vermont Caramel leather
2. CHAMALEON Round Pouf Pardust Avana and Danae Black
3. WAVE Beige Rug, 360x570cm
4. BLADE Day System, matt Amara Ebony, Vetrite Frappuccino, polished champagne finish
5. PIERRE Coffee Table, basement in silver leaf patina finish, top in Vetrite Frappuccino

OLD IMPERIAL

This generously sized room is designed to recreate a Majlis, a space which in the Arab world is used to receive guests. In recent years SICIS has dedicated itself to the design of this type of environments for the private sphere, and the choice is to show how it is possible to use the furnishings in the collection, slightly revised and adapted, to meet the needs of markets with different cultures.

The room has a rectangular development: on one side we find the Island sofas upholstered in leather and placed side by side with seats marked by rollers that serve as armrests, and enriched by decorative cushions. Between the compositions we find precious low tables with an iron structure and decorations in cast brass with tops in Vetrinite and crystal worked legs. On the opposite side we have small conversation areas recreated with the Medea armchairs upholstered in leather and embroidered with floral tendrils on the sides, and two Empire-style consoles with patina finish and a micromosaic frieze that makes them particularly precious. The mirrors above the consoles are inspired by the Louis XV style, made of hand-carved wood, real jewels in terms of workmanship and details. The whole room has a strong identity and a great wealth of decorations, also thanks to the artistic mosaics and Vetrinite on the walls.







SICIS



123



SICIS



125



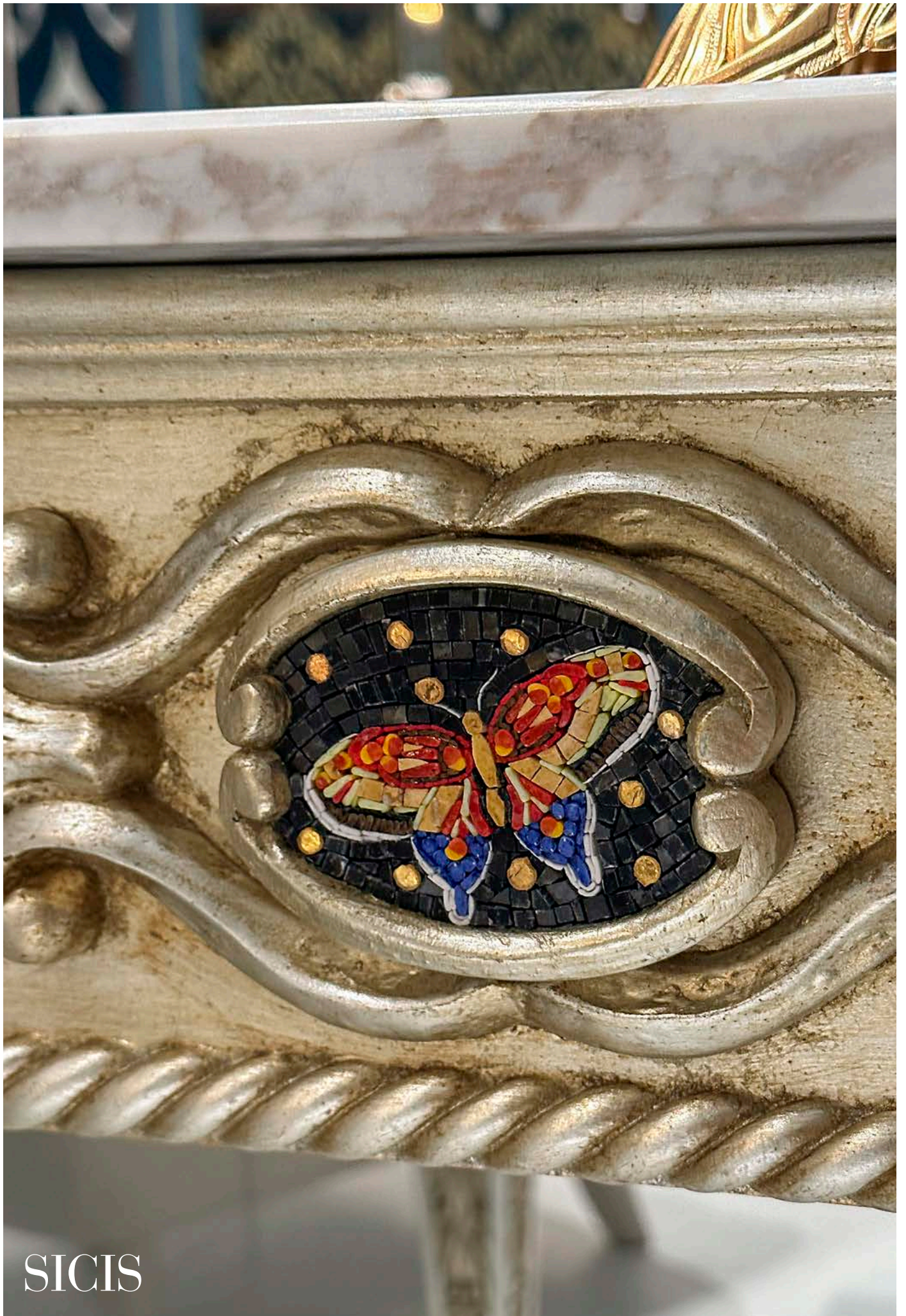
SICIS





SICIS





SICIS





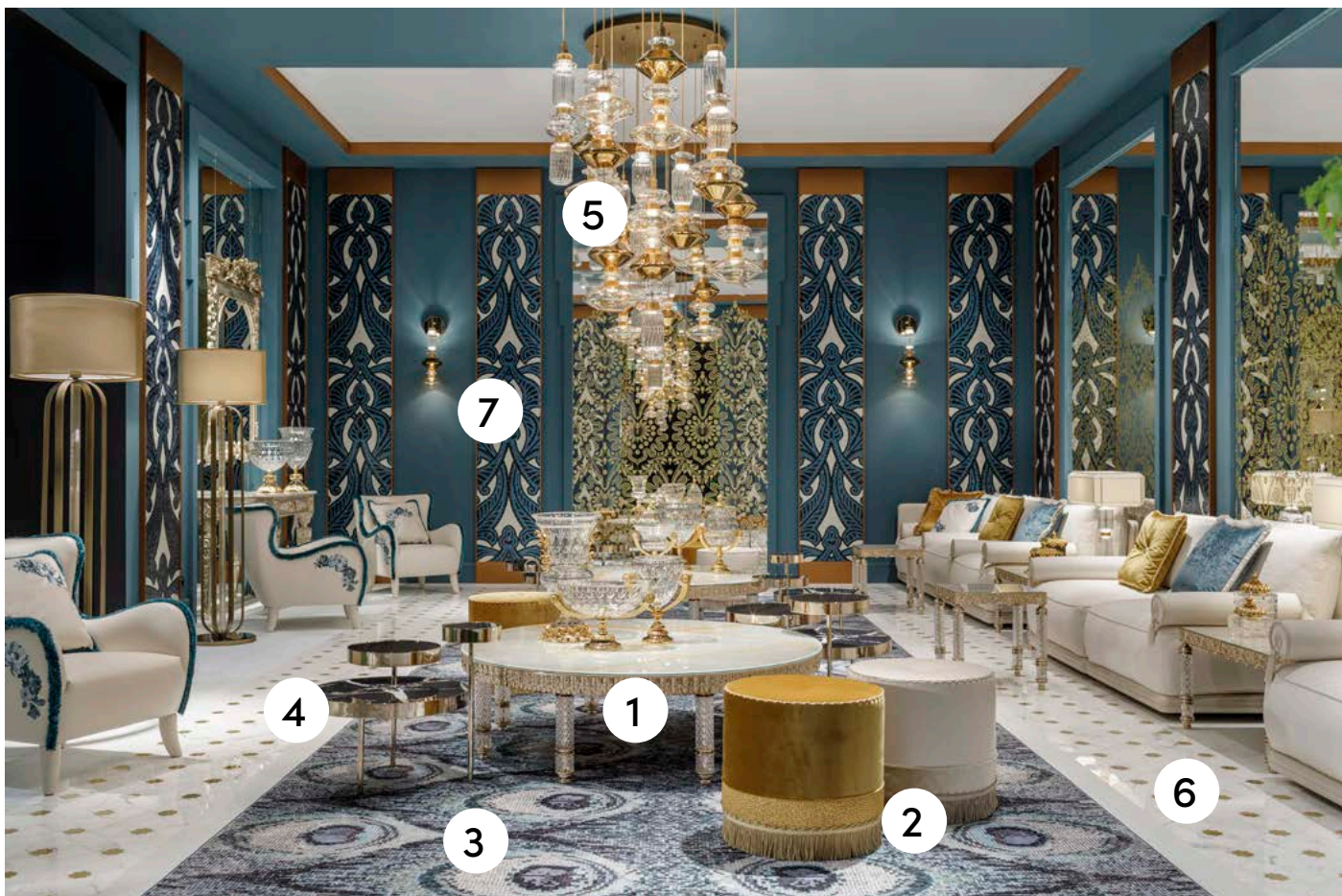
SIGIS



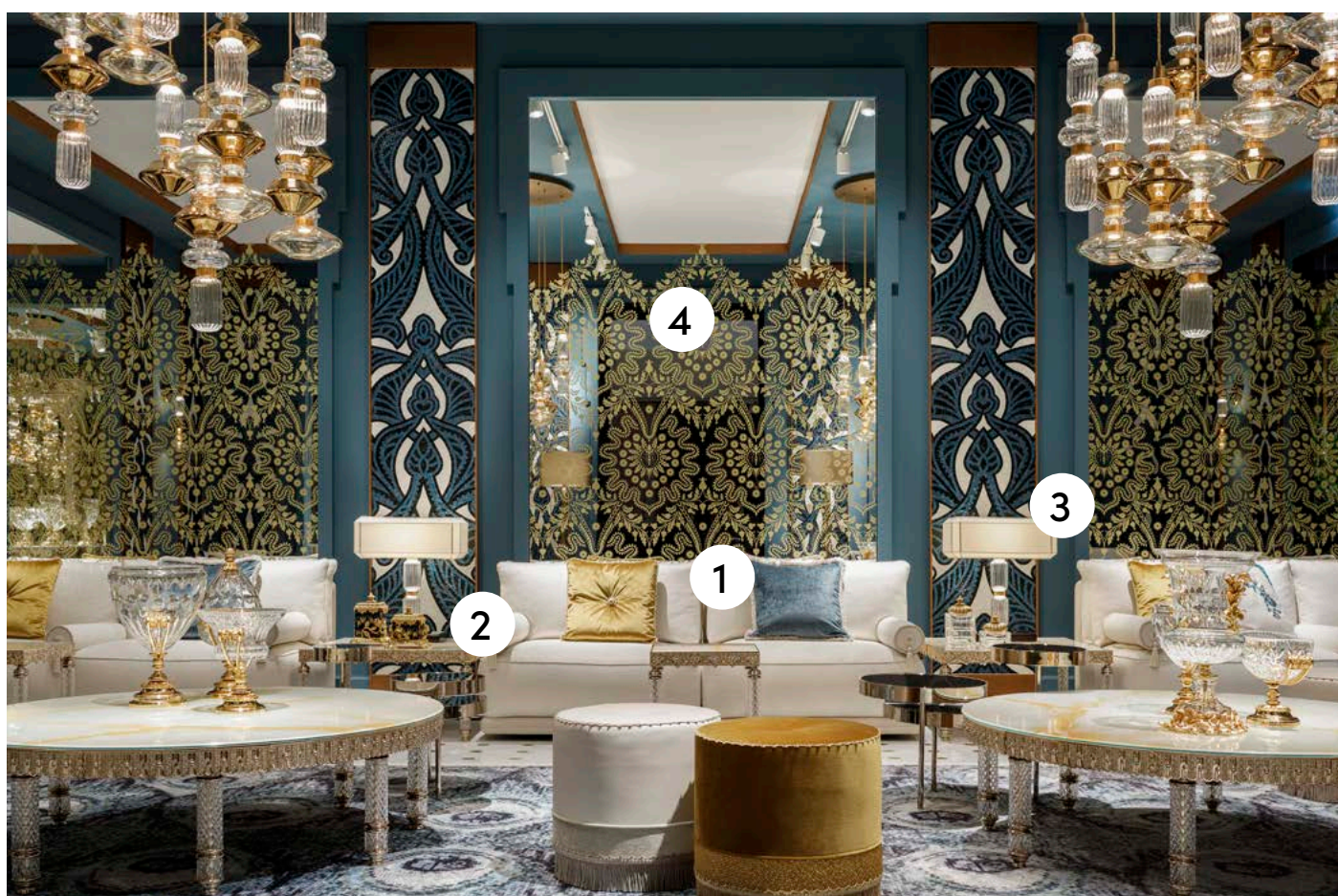


Qud
Imperial

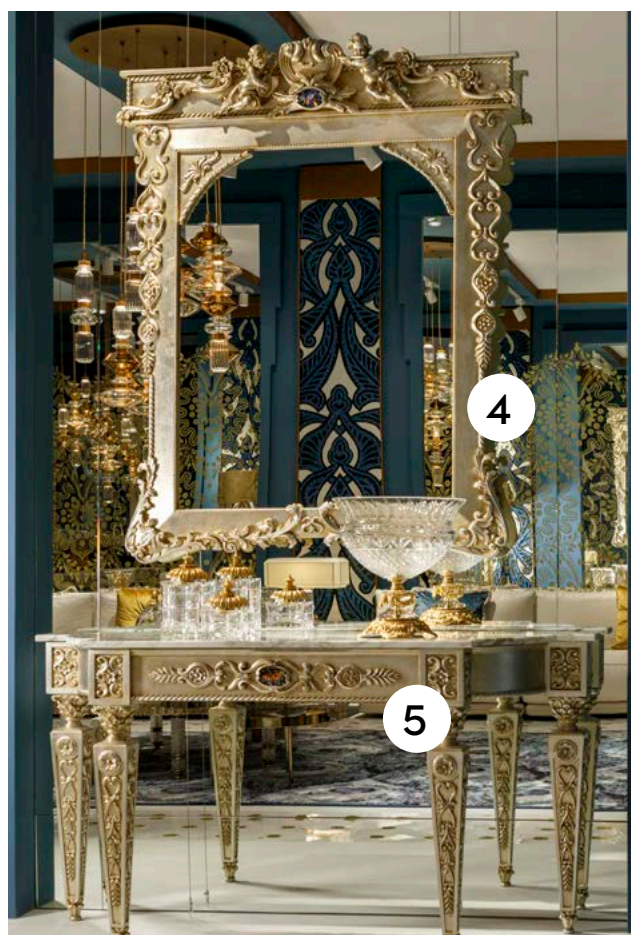
PRODUCT LIST



1. CARROUSEL Round Coffee Table, iron frame in champagne finish, top in Vetrite Onigem Ivory
2. KHIVA Pouf Oregon Cream/Elios Smoke and Glauco Gold/Bolis Gold
3. PAVO REAL BLUE Rug, 280x820
4. ORBITAL Side Table Big and Small, polished champagne frame, top in Vetrite Black Marquinia/bronzed mirror
5. BALLET Ceiling Lamps, bronze
6. MARBLE border with glass inserts
7. BALLET Wall Sconce, bronze



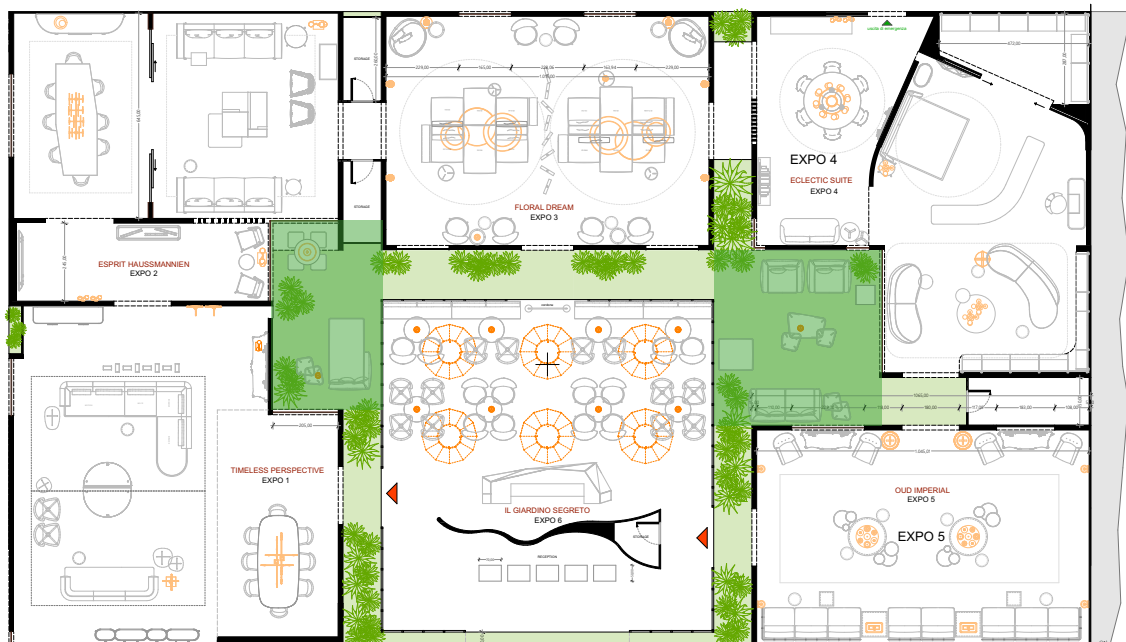
1. ISLAND Sofa Composition, frame Oregon Cream, seat/back cushions Selene Ivory
2. CARROUSEL Side Table, iron frame in champagne finish, top in Vetrite Onigem Ivory
3. BALLET Table Lamp
4. DECORATED Mirror



1. MEDEA Armchair Oregon Cream, petroleum fringes and Blue Flower embroidery
2. ODEON Floor Lamp
3. REY artistic mosaic panel
4. ANDRÈ Mirror, silver champagne patina finish, 120x160cm
5. TUILERIES Console, frame in silver champagne patina finish, top in Calacatta Gold marble

OUTDOOR

All the rooms are structures in themselves, connected by green paths like trails that open onto small relaxation areas where the furnishings from the outdoor collection find their place. Lipari sofas, armchairs and sunbeds presented with a new Labuan fabric variant in aqua and ivory. The small tables with Vetríte tops and the Drop battery lamps complete the proposal and are perfect for brightening up a summer evening spent under the stars with friends.



SICIS



139



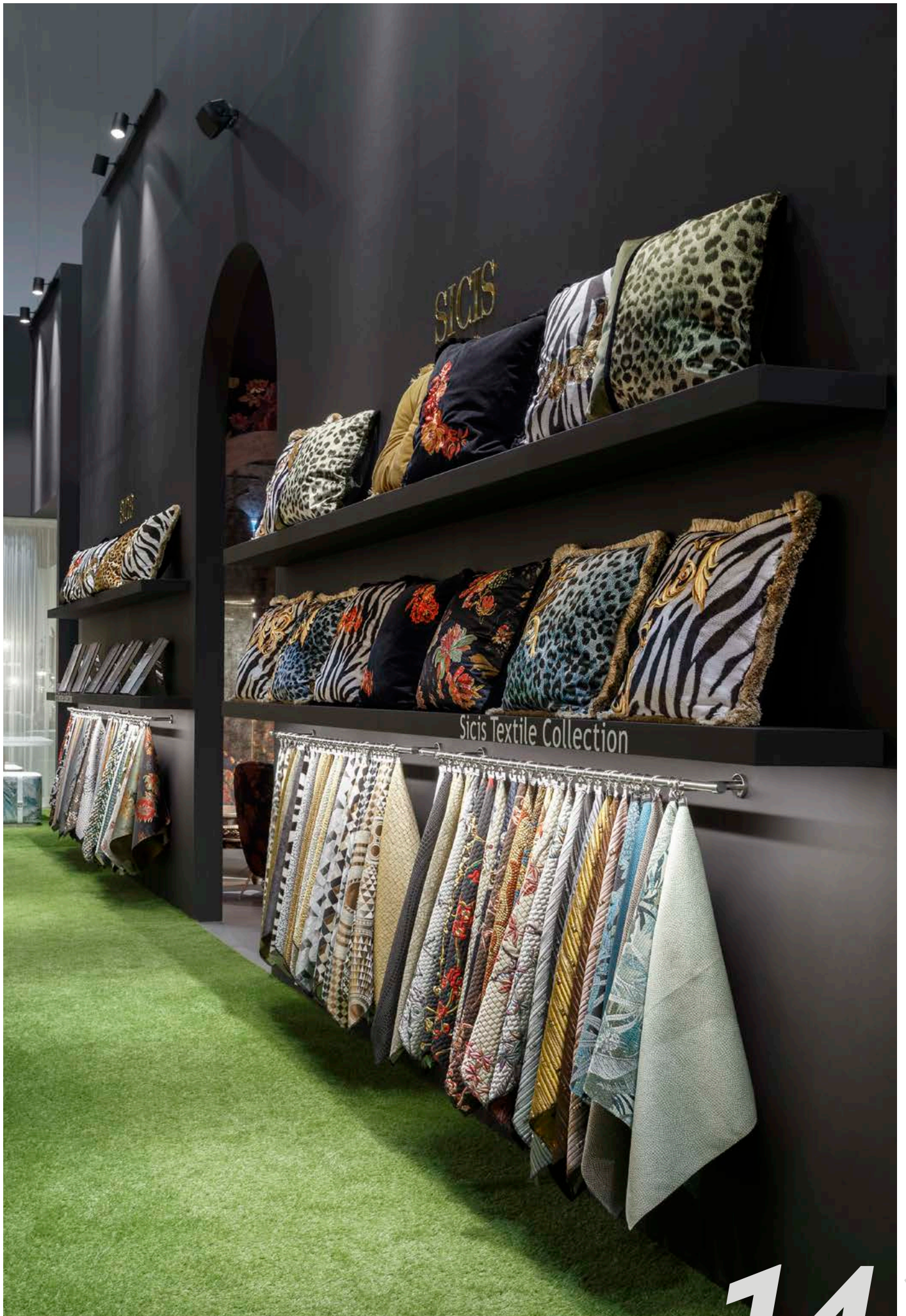
SICIS



141



SICIS





Outdoor

PRODUCT LIST



1. LIPARI 2 Seater Sofa Lubok Ivory/Labuan Aqua, frame in matt white lacquer
2. LIPARI Armchair Lubok Ivory/Labuan Aqua, frame in matt white lacquer
3. LIPARI Pouf Lubok Ivory/Bandar Aqua, frame in matt white lacquer
4. FILICUDI Coffee Table, top in Vetríte Electric Marble Cal Silver, frame in matt white lacquer
5. FILICUDI High Side Table, top in Vetríte Gem Glass Reef, frame in matt white lacquer
6. DROP Battery Table Lamp, base in matt white lacquer, transparent spheres

SICIS®

RESOURCES

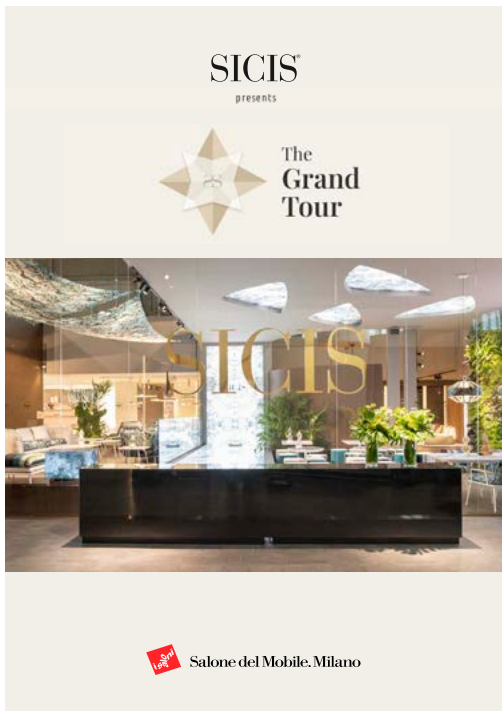
Click on the images to explore the contents



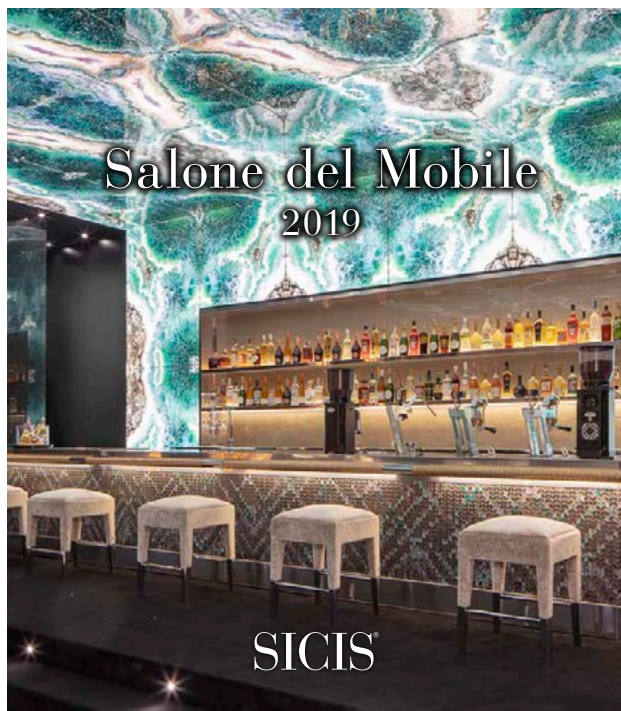
SALONE DEL MOBILE 2023 INTRODUCTION
YOUTUBE VIDEO

THE
**AMAZING
ROOMS**
COLLECTION





SALONE DEL MOBILE 2022



SALONE DEL MOBILE 2019



SICIS SHOWROOMS: RAVENNA



SICIS

www.sicis.com